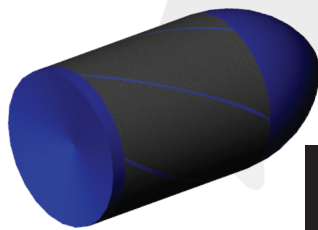


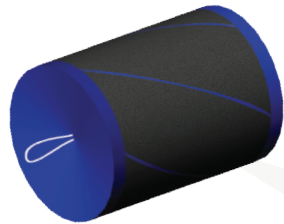
Porcupine

2-60" (51-1524mm)

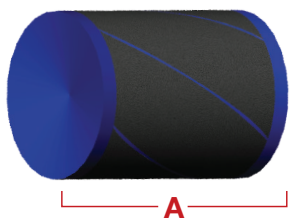
The Apache Porcupine pigs are heavy density foam pigs designed for scraping pipelines. The Double Dish is ideal for bi-directional operations. Porcupine foam pigs are one of the most cost effective, durable designs of pipeline cleaners in the market today.



PORCUPINE



**PORCUPINE
Double Dish**



"A" represents sealing surface. This dimension is the same for both styles.

Features & Benefits:

- Cleaning.
- Excellent for gas pipelines.
- Works in all piping systems.

Options Available:

- Handling rope.
- Trans-Cavity.
- Custom sizes available.
- Also available in light density (yellow) and hard density (blue).

Size	A	B
2"	2.500	2.000
	2.875	2.250
	3.250	2.500
	3.500	2.750
3"	3.750	3.000
	4.125	3.250
	4.500	3.500
	4.750	3.750
4"	5.000	4.000
	5.375	4.250
	5.625	4.500
	6.000	4.750
5"	6.375	5.000
	6.625	5.250
	7.000	5.500
	7.375	5.750
6"	7.625	6.000
	7.875	6.250
	8.500	6.500
	8.625	6.750
7"	8.875	7.000
	9.250	7.250
8"	10.125	8.000
	10.375	8.250
	10.750	8.500

Size	A	B
10"	12.500	10.000
	12.875	10.250
	13.250	10.500
12"	15.000	12.000
	15.325	12.250
	15.750	12.500
14"	17.500	14.000
16"	20.000	16.000
16.25"	20.375	16.250
16.50"	20.375	16.500
18"	22.500	18.000
20"	25.000	20.000
22"	27.500	22.000
23.50"	30.500	23.500
24"	30.000	24.000
26"	39.000	26.000
30"	45.000	30.000
32"	48.000	32.000
34"	51.000	34.000
36"	54.000	36.000
40"	60.000	40.000
42"	63.000	42.000
48"	72.000	48.000
56"	76.500	56.000
60"	90.000	60.000