

## UT-M Cup

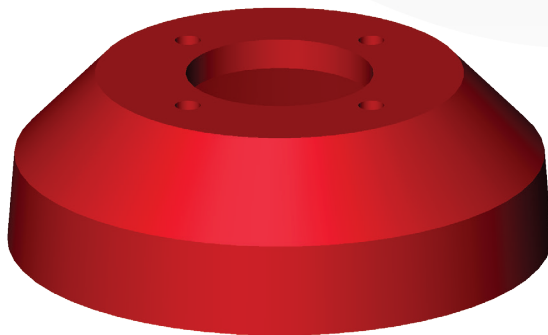
### 6-14" (152-356mm)

Given that anomalies are a fairly common feature of a pipeline scheduled for maintenance, it's reassuring that pigs mounted with Series M UT cups are engineered to elongate and can traverse pipeline anomalies of up to 20% without damaging the pig. This means that runs go as planned, without delay.

As with all of Apache products, the Series M cup was specifically developed to perform, efficiently and reliably during batching operations. To enhance durability, it's made from Reliathane, Apache's special blend wear-resistant polyurethane.

The heavy design and large wearing surface provide an excellent and effective seal in displacement and batching operation while still offering unsurpassed flexibility.

To enhance cup life, conical cups are available with a variety of wear-resistant additives. In fact, Apache developed a proprietary chemical resistant urethane to help protect against conditions, such as hydrogen sulphide, encountered in severe environments.



| Size | O.D.   | I.D.  | Part #     |
|------|--------|-------|------------|
| 6"   | 6.500  | 2.500 | 91-4010-06 |
| 8"   | 8.375  | 3.000 | 91-4010-08 |
| 10"  | 10.500 | 3.630 | 91-4010-10 |
| 12"  | 12.500 | 4.630 | 91-4010-12 |
| 14"  | 14.000 | 4.630 | 91-4010-14 |

#### Options Available:

- Different durometers available on request.
- High temperature material.
- Custom I.D/O.D bolt pattern and thickness available on request.