

UM - FP

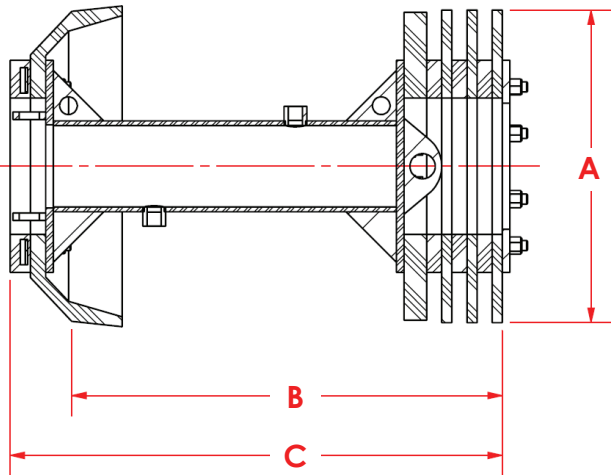
16-42" (406-1067mm)

The Filming Pig was designed for one purpose: to apply a film of inhibitor with 360-degree coverage on the interior pipe wall.

The unique design of the 16" – 42" UM Filming Pig features a hollow front mandrel with two port holes in the center of the mandrel. By doing so, inhibitor is allowed to travel through the hollow front mandrel and two port holes located on either side. Inhibitor becomes trapped between the front conical cup, back three soft filming discs and support disc, leaving a film of inhibitor on the pipe wall.

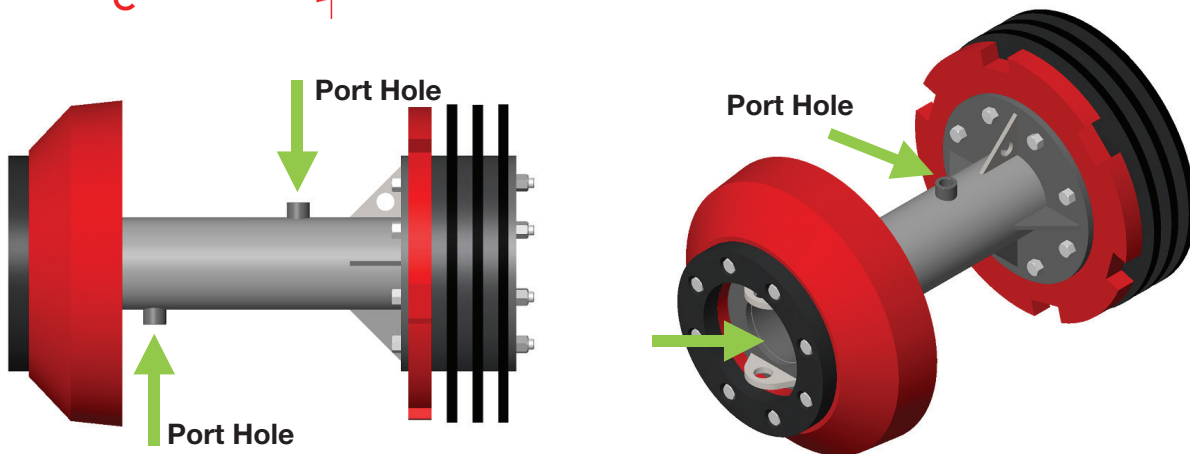
Every Apache UM FP 16"- 42" pig is manufactured with port holes so that product flow is redirected through these openings.

Designed to negotiate 1.5D bends, the UM - FP moves reliably through piping systems.



Size	A	B	C	Weight	Part #
16"	*TBD	21.34"	24.39"	79	70-5801-16
20"	*TBD	25.27"	28.89"	134	70-5801-20
22"	*TBD	28.49"	32.39"	167	70-5801-22
24"	*TBD	28.33"	32.71"	187	70-5801-24
30"	*TBD	34.86"	40.02"	355	70-5801-30
36"	*TBD	50.90"	44.39"	557	70-5801-36
42"	*TBD	50.53"	57.77"	815	70-5801-42

*TBD - Determined by the Wall Thickness(es) / ID of the pipeline.



Inhibitor travels through the hollow front mandrel and two port holes located on either side of the mandrel, ultimately leaving a film of protective corrosion inhibitor on the pipe wall.

