

# REPLACEMENT PARTS

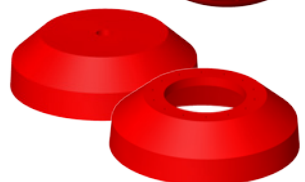
## CUPS



**C - Scraper**  
2-14" Pg. 6-2  
16-48" Pg. 6-3



**JC - Jetted**  
2-14" Pg. 6-4  
16-48" Pg. 6-5



**M - Conical**  
3-14" Pg. 6-6  
16-48" Pg. 6-7

## DISCS



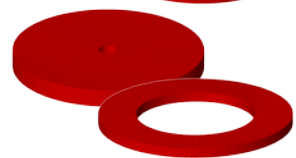
**C - Sealer**  
3-14" Pg. 6-8  
16-48" Pg. 6-9



**C - Guide**  
3-14" Pg. 6-10  
16-48" Pg. 6-11



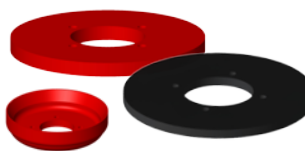
**M - Sealer**  
3-14" Pg. 6-12  
16-48" Pg. 6-13



**M - Guide**  
3-14" Pg. 6-14  
16-48" Pg. 6-15



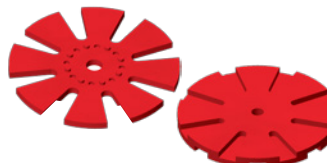
**MDK**  
16 - 48"  
Pg. 6-16



**UT**  
6 - 14"  
Pg. 6-17



**Carver Disc**  
4 - 48"  
Pg. 6-18

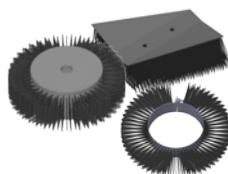


**Butterfly Disc**  
3 - 10"  
Pg. 6-19

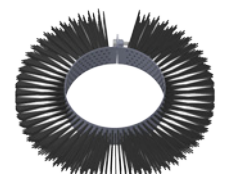


**Polyurethane Blade**  
Pg. 6-19

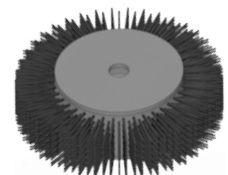
## BRUSHES



**Brushes**  
Pg. 6-20



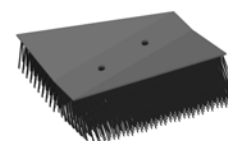
**Wrap Brush**  
*Model BB*  
Pg. 6-21



**Circular Flange**  
*Model RB*  
Pg. 6-22



**pitPRO™**  
3 - 16"  
Pg. 6-23



**Block Brush**  
*Model XB*  
Pg. 6-24



**Integrity XB**  
20 - 56"  
Pg. 6-25

# Series C

## SCRAPER CUP

2-14" (51-356mm)

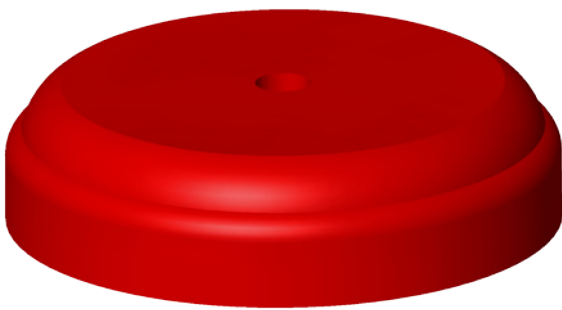
Durable. Reliable. Effective.

The unique design of the Series C Cup offers the cleaning advantages of a scraper cup and the flexibility inherent in a conical cup.

To provide a longer cup life, Apache made certain that the wear surface of the cup is three times larger than any other scraper cup on the market. Plus, the pressure of the pipeline product presses the cutting edge firmly against the pipe wall, ensuring an optimum seal.

Another advantage is that the flex area between the shank and the cleaning surface allows the cup to traverse reductions in the pipe bore caused by buckling of, or anomalies in, the pipeline. This means that runs go as planned, without delay.

As with all of Apache products, the Series C cup was specifically developed to perform, efficiently and reliably. To enhance durability, it's made from Reliathane, Apache's special blend of wear-resistant polyurethane.



Size	O.D	I.D	Weight	Part #
2"	2.125	0.50	0.1	91-3015-02
3"	3.375	0.50	0.2	91-3015-03
4"	4.375	0.50	0.4	91-3015-04
6"	6.375	1.00	1.1	91-3015-06
8"	8.500	1.00	1.9	91-3015-08
10"	10.625	1.00	3.7	91-3015-10
12"	12.750	1.00	6.1	91-3015-12
14"	13.875	1.00	8.0	91-3015-14

### Options Available:

- Custom I.D. and bolt patterns available on request.
- Different durometers available on request.
- High temperature material.

# Series C

## SCRAPER CUP

16-48" (406-1219mm)

Durable. Reliable. Effective.

The unique design of the Series C Cup offers the cleaning advantages of a scraper cup and the flexibility inherent in a conical cup.

To provide a longer cup life, Apache made certain that the wear surface of the cup is three times larger than any other scraper cup on the market. Plus, the pressure of the pipeline product presses the cutting edge firmly against the pipe wall, ensuring an optimum seal.

Another advantage is that the flex area between the shank and the cleaning surface allows the cup to traverse reductions in the pipe bore caused by buckling of, or anomalies in, the pipeline. This means that runs go as planned, without delay.

As with all of Apache products, the Series C cup was specifically developed to perform, efficiently and reliably. To enhance durability, it's made from Reliathane, Apache's special blend of wear-resistant polyurethane.

Size	O.D	I.D	Weight	Part #
16"	16.000	8.750	8.9	91-3015-16
18"	17.875	10.875	11	91-3015-18
20"	19.875	10.875	18	91-3015-20
22"	21.875	10.875	25	91-3015-22
24"	23.875	14.125	30	91-3015-24
26"	25.875	14.125	37	91-3015-26
28"	27.875	16.125	43	91-3015-28
30"	29.875	16.125	50	91-3015-30
32"	32.000	20.125	52	91-3015-32
34"	34.000	20.125	69	91-3015-34
36"	36.000	22.125	74	91-3015-36
42"	42.125	24.125	117	91-3015-42
48"	48.500	32.125	156	91-3015-48



### Options Available:

- Custom I.D. and bolt patterns available on request.
- Different durometers available on request.
- High temperature material.

# Series JC

## JETTED CUP

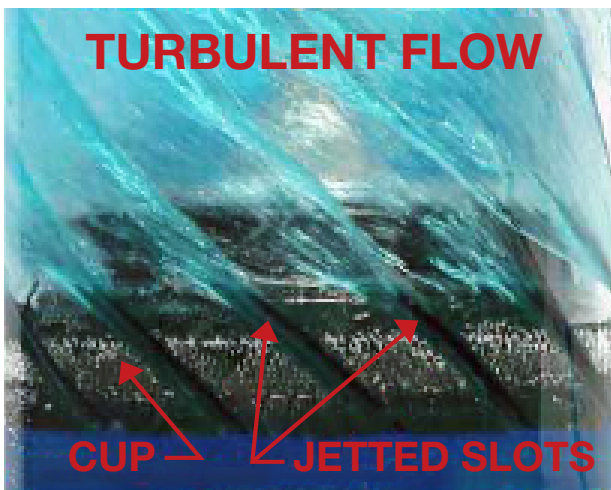
2-14" (51-356mm)

Put simply, the Jetted Cup is a jetting, scraping cleaning machine.

It works extremely well in oil, gas and products pipelines. For example, it efficiently breaks up large volumes of accumulated pipeline wax by directing bypass product through it's jetted grooves. Debris is suspended in the turbulent flow and transferred ahead of the pig. It's a great option for low flow applications, along with removal of sand and other debris.



Size	O.D	I.D	Weight	Part #
2"	2.125	0.50	0.1	91-3998-02
3"	3.375	0.50	0.2	91-3998-03
4"	4.375	0.50	0.4	91-3998-04
6"	6.375	1.00	1.1	91-3998-06
8"	8.500	1.00	1.9	91-3998-08
10"	10.625	1.00	3.7	91-3998-10
12"	12.750	1.00	6.1	91-3998-12
14"	13.875	1.00	8.0	91-3998-14



The design of the jetting grooves on the lip of the cup promote the pig to rotate as it travels, ensuring even wear of the cup. This increases cup life and reduces operating costs.

The turbulence created dislodges the debris collected around either the cups or discs, and transfers it ahead of the pig. As a result, these grooves in the cup's surface create *five times the scraping surface*, making it possible to aim a calibrated amount of fluid to pummel the pipe wall, jetting away – and suspending – stubborn wax, sand or other debris.



Check out [apachepipe.com/animations.html](http://apachepipe.com/animations.html) for videos on jetted cups.



# Series JC

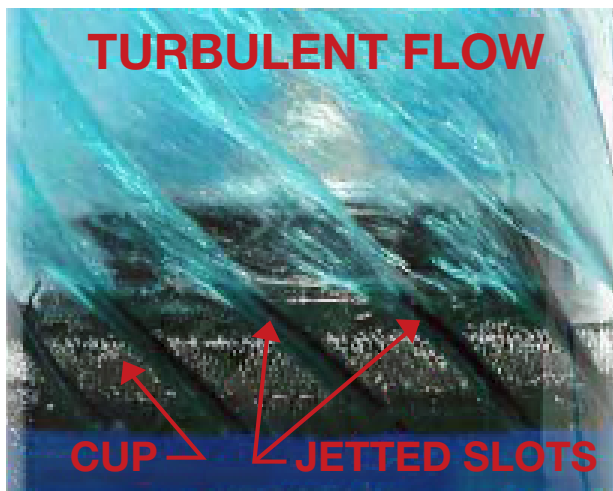
## JETTED CUP

16-48" (406-1219mm)

Put simply, the Jetted Cup is a jetting, scraping cleaning machine.

It works extremely well in oil, gas and products pipelines. For example, it efficiently breaks up large volumes of accumulated pipeline wax by directing bypass product through it's jetted grooves. Debris is suspended in the turbulent flow and transferred ahead of the pig. It's a great option for low flow applications, along with removal of sand and other debris.

Size	O.D	I.D	Weight	Part #
16"	16.000	8.750	8.9	91-3998-16
18"	17.875	10.875	11	91-3998-18
20"	19.875	10.875	18	91-3998-20
24"	23.875	14.125	30	91-3998-24
26"	25.875	14.125	37	91-3998-26
30"	29.875	16.125	50	91-3998-30
34"	34.000	20.125	69	91-3998-34
36"	36.000	22.125	74	91-3998-36
42"	42.125	24.125	117	91-3998-42
48"	48.500	32.125	156	91-3998-48



The design of the jetting grooves on the lip of the cup promote the pig to rotate as it travels, ensuring even wear of the cup. This increases cup life and reduces operating costs.

The turbulence created dislodges the debris collected around either the cups or discs, and transfers it ahead of the pig. As a result, these grooves in the cup's surface create *five times the scraping surface*, making it possible to aim a calibrated amount of fluid to pummel the pipe wall, jetting away – and suspending – stubborn wax, sand or other debris.



Check out [apachepipe.com/animations.html](http://apachepipe.com/animations.html) for videos on jetted cups.

# Series M

## CONICAL CUP

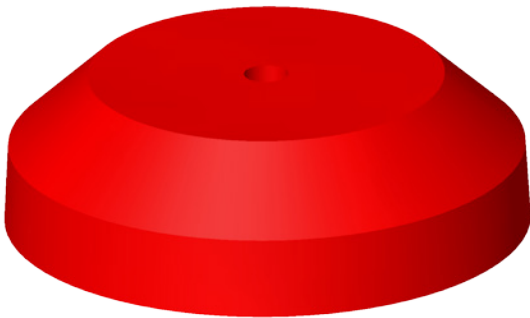
3-14" (76-356mm)

Given that anomalies are a fairly common feature of a pipeline scheduled for maintenance, it's reassuring that pigs mounted with Series M conical cups are engineered to elongate and can traverse pipeline anomalies of up to 20% without damaging the pig. This means that runs go as planned, without delay.

As with all of Apache products, the Series M cup was specifically developed to perform, efficiently and reliably during batching operations. To enhance durability, it's made from Reliathane, Apache's special blend of wear-resistant polyurethane.

The heavy design and large wearing surface provide an excellent and effective seal in displacement and batching operation while still offering unsurpassed flexibility

To enhance cup life, conical cups are available with a variety of wear-resistant additives. In fact, Apache developed a proprietary chemical resistant urethane to help protect against conditions, such as hydrogen sulphide, encountered in severe environments.



Size	O.D	I.D	Weight	Part #
3"	3.375	0.500	0.1	91-5010-03
4"	4.375	0.500	0.2	91-5010-04
6"	6.500	1.000	1.0	91-5010-06
8"	8.375	1.000	1.7	91-5010-08
10"	10.500	1.000	3.0	91-5010-10
12"	12.500	1.000	4.1	91-5010-12
14"	14.000	1.000	6.3	91-5010-14

### Options Available:

- Custom I.D. and bolt patterns available on request.
- Different durometers available on request.
- High temperature material.

# Series M

## CONICAL CUP

16-48" (406-1219mm)

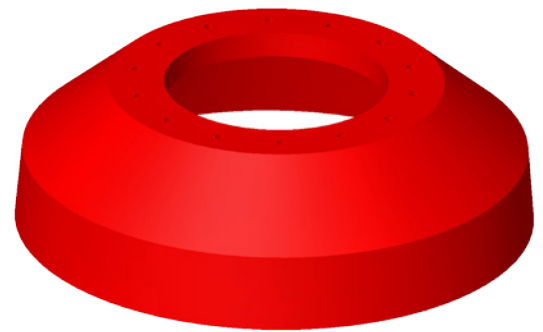
Given that anomalies are a fairly common feature of a pipeline scheduled for maintenance, it's reassuring that pigs mounted with Series M conical cups are engineered to elongate and can traverse pipeline anomalies of up to 20% without damaging the pig. This means that runs go as planned, without delay.

As with all of Apache products, the Series M cup was specifically developed to perform, efficiently and reliably during batching operations. To enhance durability, it's made from Reliathane, Apache's special blend of wear-resistant polyurethane.

The heavy design and large wearing surface provide an excellent and effective seal in displacement and batching operation while still offering unsurpassed flexibility

To enhance cup life, conical cups are available with a variety of wear-resistant additives. In fact, Apache developed a proprietary chemical resistant urethane to help protect against conditions, such as hydrogen sulphide, encountered in severe environments.

Size	O.D	I.D	Weight	Part #
16"	15.875	6.750	8.2	91-5010-16
18"	18.000	8.375	12	91-5010-18
20"	20.000	8.375	14	91-5010-20
22"	22.000	10.375	21	91-5010-22
24"	24.000	10.375	27	91-5010-24
26"	26.000	12.375	32	91-5010-26
28"	28.000	12.375	42	91-5010-28
30"	29.875	15.375	50	91-5010-30
32"	32.000	15.375	59	91-5010-32
34"	34.000	17.375	79	91-5010-34
36"	36.000	17.375	90	91-5010-36
38"	38.000	20.375	105	91-5010-38
40"	40.000	20.375	148	91-5010-40
42"	42.000	20.375	213	91-5010-42
48"	48.125	24.375	246	91-5010-48



### Options Available:

- Custom I.D. and bolt patterns available on request.
- Different durometers available on request.
- High temperature material.

# Series C

## SEALER DISCS

3-14" (76-356mm)

Durable. Reliable. Effective.

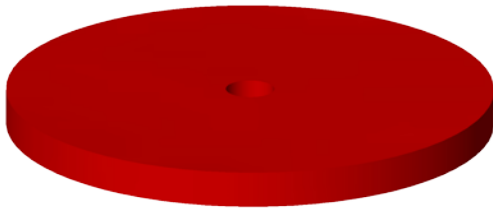
Apache sealer discs are also extremely versatile and can perform in bi-directional or uni-directional applications.

To meet your unique requirements, simply order custom dimensions, durometer or material composition of the discs. Standard 72 durometer discs are used for sealing and have the ability to flip over easily for bi-directional travel. 86 durometer discs are used for scraping and cleaning the line.

As with all of Apache products, the Series C disc was specifically developed to perform, efficiently and reliably. To enhance durability, it's made from Reliathane, Apache's special blend of wear-resistant polyurethane.

To enhance disc life, sealer discs are available with a variety of wear-resistant additives. In fact, Apache developed a proprietary chemical resistant urethane to help protect against conditions, such as hydrogen sulphide, encountered in severe environments.

**\*Series C parts mount on different style pigs than our Series M.**



Size	O.D	I.D	Weight	Part #
3"	3.375	0.500	0.1	91-3210-03
4"	4.375	0.500	0.2	91-3210-04
6"	6.375	1.000	0.5	91-3210-06
8"	8.375	1.000	1.2	91-3210-08
10"	10.500	1.000	1.9	91-3210-10
12"	12.500	1.000	3.3	91-3210-12
14"	13.875	1.000	4.1	91-3210-14

### Options Available:

- 72 durometer or 86 durometer.
- Wear-resistant additives.
- Custom I.D./O.D. bolt pattern and thickness available on request.
- High temperature material.



# Series C

## SEALER DISCS

16-48" (406-1219mm)

Durable. Reliable. Effective.

Apache sealer discs are also extremely versatile and can perform in bi-directional or uni-directional applications.

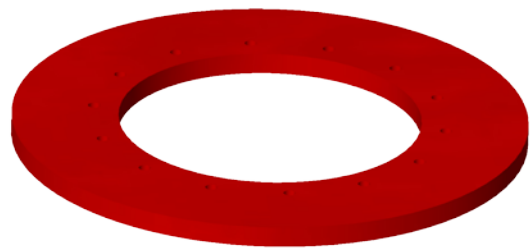
To meet your unique requirements, simply order custom dimensions, durometer or material composition of the discs. Standard 72 durometer discs are used for sealing and have the ability to flip over easily for bi-directional travel. 86 durometer discs are used for scraping and cleaning the line.

As with all of Apache products, the Series C disc was specifically developed to perform, efficiently and reliably. To enhance durability, it's made from Reliathane, Apache's special blend of wear-resistant polyurethane.

To enhance disc life, sealer discs are available with a variety of wear-resistant additives. In fact, Apache developed a proprietary chemical resistant urethane to help protect against conditions, such as hydrogen sulphide, encountered in severe environments.

**\*Series C parts mount on different style pigs than our Series M.**

Size	O.D	I.D	Weight	Part #
16"	15.875	8.750	4.5	91-3210-16
18"	17.875	10.875	5.2	91-3210-18
20"	20.000	10.875	8.4	91-3210-20
22"	22.000	10.875	11	91-3210-22
24"	24.125	14.125	13	91-3210-24
26"	26.125	14.125	17	91-3210-26
28"	28.250	16.125	21	91-3210-28
30"	30.250	16.125	25	91-3210-30
32"	32.375	20.125	27	91-3210-32
34"	34.375	20.125	33	91-3210-34
36"	36.500	22.125	40	91-3210-36
38"	38.500	22.125	47	91-3210-38
40"	40.625	22.125	54	91-3210-40
42"	42.125	24.125	63	91-3210-42
48"	48.875	32.125	81	91-3210-48



### Options Available:

- 72 durometer or 86 durometer.
- Wear-resistant additives.
- Custom I.D./O.D. bolt pattern and thickness available on request.
- High temperature material.

# Series C

## GUIDE DISCS

3-14" (76-356mm)

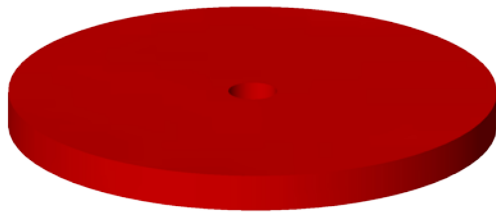
Durable. Reliable. Effective.

Apache guide discs are extremely versatile and can perform in bi-directional or uni-directional applications.

As with all of Apache products, the Series C disc was specifically developed to perform, efficiently and reliably. To enhance durability, it's made from Reliathane, Apache's special blend of wear-resistant polyurethane.

To enhance disc life, guide discs are available with a variety of wear-resistant additives. In fact, Apache developed a proprietary chemical resistant urethane to help protect against conditions, such as hydrogen sulphide, encountered in severe environments.

**\*Series C parts mount on different style pigs than our Series M.**



Size	O.D	I.D	Weight	Part #
3"	3.000	0.500	0.1	91-3220-03
4"	4.000	0.500	0.2	91-3220-04
6"	6.000	1.000	0.7	91-3220-06
8"	8.000	1.000	1.6	91-3220-08
10"	10.000	1.000	2.5	91-3220-10
12"	12.000	1.000	4.2	91-3220-12
14"	13.750	1.000	5.2	91-3220-14

### Options Available:

- Wear-resistant additives.
- Custom I.D./O.D. bolt pattern and thickness available on request.
- High temperature material.

# Series C

## GUIDE DISCS

16-48" (406-1219mm)

Durable. Reliable. Effective.

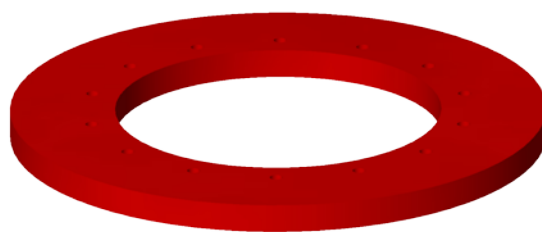
Apache guide discs are extremely versatile and can perform in bi-directional or uni-directional applications.

As with all of Apache products, the Series C disc was specifically developed to perform, efficiently and reliably. To enhance durability, it's made from Reliathane, Apache's special blend of wear-resistant polyurethane.

To enhance disc life, guide discs are available with a variety of wear-resistant additives. In fact, Apache developed a proprietary chemical resistant urethane to help protect against conditions, such as hydrogen sulphide, encountered in severe environments.

**\*Series C parts mount on different style pigs than our Series M.**

Size	O.D	I.D	Weight	Part #
16"	15.250	8.750	6.0	91-3220-16
18"	17.250	10.875	6.9	91-3220-18
20"	19.250	10.875	11	91-3220-20
22"	21.250	10.875	14	91-3220-22
24"	23.250	14.125	15	91-3220-24
26"	25.250	14.125	19	91-3220-26
28"	27.250	16.125	25	91-3220-28
30"	29.250	16.125	31	91-3220-30
32"	31.250	20.125	32	91-3220-32
34"	33.250	20.125	39	91-3220-34
36"	35.250	22.125	45	91-3220-36
38"	37.250	22.125	54	91-3220-38
40"	39.250	22.125	63	91-3220-40
42"	41.250	24.250	76	91-3220-42
48"	47.250	32.125	97	91-3220-48



### Options Available:

- Wear-resistant additives.
- Custom I.D./O.D. bolt pattern and thickness available on request.
- High temperature material.

# Series M

## SEALER DISCS

3-14" (76-356mm)

Durable. Reliable. Effective.

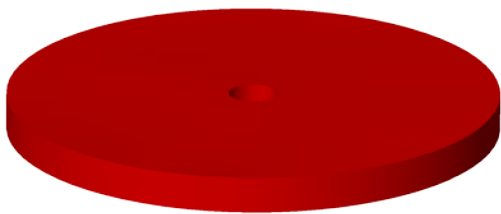
Apache sealer discs are extremely versatile and can perform in bi-directional or uni-directional applications.

To meet your unique requirements, simply order custom dimensions, durometer or material composition of the discs. Standard 72 durometer discs are used for sealing and have the ability to flip over easily for bi-directional travel. 86 durometer discs are used for scraping and cleaning the line.

As with all of Apache products, the Series M disc was specifically developed to perform, efficiently and reliably. To enhance durability, it's made from Reliathane, Apache's special blend of wear-resistant polyurethane.

To enhance disc life, sealer discs are available with a variety of wear-resistant additives. In fact, Apache developed a proprietary chemical resistant urethane to help protect against conditions, such as hydrogen sulphide, encountered in severe environments.

**\*Series M parts mount on different style pigs than our Series C.**



Size	O.D	I.D	Weight	Part #
3"	3.375	0.500	0.1	91-5210-03
4"	4.375	0.500	0.2	91-5210-04
6"	6.375	1.000	0.5	91-5210-06
8"	8.375	1.000	1.2	91-5210-08
10"	10.500	1.000	1.9	91-5210-10
12"	12.500	1.000	3.3	91-5210-12
14"	13.875	1.000	4.1	91-5210-14

*\*Part numbers shown are for 85 Durometer (72 also available)*

### Options Available:

- 72 durometer or 86 durometer.
- Wear-resistant additives.
- Custom I.D./O.D. bolt pattern and thickness available on request.
- High temperature material.



# Series M

## SEALER DISCS

16-48" (406-1219mm)

Durable. Reliable. Effective.

Apache sealer discs are extremely versatile and can perform in bi-directional or uni-directional applications.

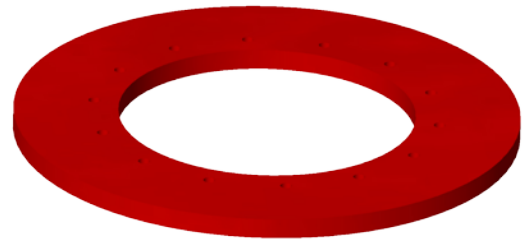
To meet your unique requirements, simply order custom dimensions, durometer or material composition of the discs. Standard 72 durometer discs are used for sealing and have the ability to flip over easily for bi-directional travel. 86 durometer discs are used for scraping and cleaning the line.

As with all of Apache products, the Series M disc was specifically developed to perform, efficiently and reliably. To enhance durability, it's made from Reliathane, Apache's special blend of wear-resistant polyurethane.

To enhance disc life, sealer discs are available with a variety of wear-resistant additives. In fact, Apache developed a proprietary chemical resistant urethane to help protect against conditions, such as hydrogen sulphide, encountered in severe environments.

**\*Series M parts mount on different style pigs than our Series C.**

Size	O.D	I.D	Weight	Part #
16"	15.875	6.750	5.1	91-5210-16
18"	17.875	8.375	6.4	91-5210-18
20"	20.000	8.375	9.7	91-5210-20
22"	22.000	10.375	11	91-5210-22
24"	24.125	10.375	16	91-5210-24
26"	26.125	12.375	18	91-5210-26
28"	28.250	12.375	25	91-5210-28
30"	30.250	15.375	26	91-5210-30
32"	32.375	15.375	34	91-5210-32
34"	34.375	17.375	37	91-5210-34
36"	36.500	17.375	44	91-5210-36
38"	38.500	20.875	44	91-5210-38
40"	40.625	20.875	51	91-5210-40
42"	42.125	20.875	64	91-5210-42
48"	48.875	24.875	90	91-5210-48



### Options Available:

- 72 durometer or 86 durometer.
- Wear-resistant additives.
- Custom I.D./O.D. bolt pattern and thickness available on request.
- High temperature material.

*\*Part numbers shown are for 85 Durometer (72 also available)*

# Series M

## GUIDE DISCS

3-14" (76-356mm)

Durable. Reliable. Effective.

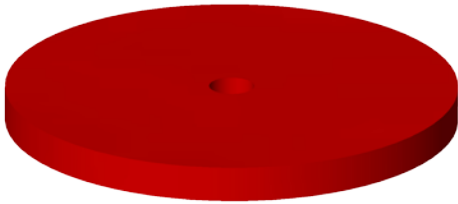
Apache guide discs are extremely versatile and can perform in bi-directional or uni-directional applications.

To meet your unique requirements, simply order custom dimensions, durometer or material composition of the discs.

As with all of Apache products, the Series M disc was specifically developed to perform, efficiently and reliably. To enhance durability, it's made from Reliathane, Apache's special blend of wear-resistant polyurethane.

To enhance disc life, guide discs are available with a variety of wear-resistant additives. In fact, Apache developed a proprietary chemical resistant urethane to help protect against conditions, such as hydrogen sulphide, encountered in severe environments.

**\*Series M parts mount on different style pigs than our Series C.**



Size	O.D	I.D	Weight	Part #
3"	3.000	0.500	0.1	91-5220-03
4"	4.000	0.500	0.2	91-5220-04
6"	6.000	1.000	0.7	91-5220-06
8"	8.000	1.000	1.6	91-5220-08
10"	10.000	1.000	2.5	91-5220-10
12"	12.000	1.000	4.2	91-5220-12
14"	13.250	1.000	5.2	91-5220-14

### Options Available:

- Wear-resistant additives.
- Custom I.D./O.D. bolt pattern and thickness available on request.
- High temperature material.

# Series M

## GUIDE DISCS

16-48" (406-1219mm)

Durable. Reliable. Effective.

Apache guide discs are extremely versatile and can perform in bi-directional or uni-directional applications.

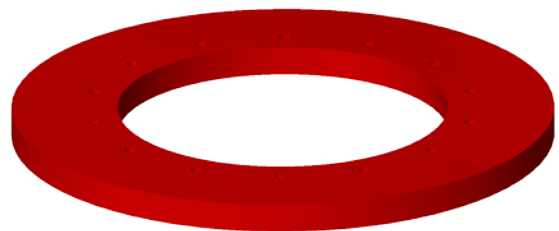
To meet your unique requirements, simply order custom dimensions, durometer or material composition of the discs.

As with all of Apache products, the Series M disc was specifically developed to perform, efficiently and reliably. To enhance durability, it's made from Reliathane, Apache's special blend of wear-resistant polyurethane.

To enhance disc life, guide discs are available with a variety of wear-resistant additives. In fact, Apache developed a proprietary chemical resistant urethane to help protect against conditions, such as hydrogen sulphide, encountered in severe environments.

**\*Series M parts mount on different style pigs than our Series C.**

Size	O.D	I.D	Weight	Part #
16"	15.250	6.750	7.2	91-5220-16
18"	17.250	8.375	8.7	91-5220-18
20"	19.250	8.375	13	91-5220-20
22"	21.250	10.375	15	91-5220-22
24"	23.250	10.375	19	91-5220-24
26"	25.250	12.375	21	91-5220-26
28"	27.250	12.375	30	91-5220-28
30"	29.250	15.375	32	91-5220-30
32"	31.250	15.375	41	91-5220-32
34"	33.250	17.375	45	91-5220-34
36"	35.250	17.375	56	91-5220-36
38"	37.250	20.875	57	91-5220-38
40"	39.250	20.875	66	91-5220-40
42"	41.250	20.875	86	91-5220-42
48"	47.250	24.875	131	91-5220-48



### Options Available:

- Wear-resistant additives.
- Custom I.D./O.D. bolt pattern and thickness available on request.
- High temperature material.

# Series MDK

## SEALER DISC

16-48" (406-1219mm)

Size	O.D	I.D	# Holes	Weight	Part #
16"	15.875	8.750	12	4.5	91-7200-16
20"	20.000	10.875	12	7.9	91-7200-20
24"	24.125	14.125	12	14	91-7200-24
30"	30.250	18.125	12	22	91-7200-30
36"	36.500	22.250	12	38	91-7200-36
42"	42.125	26.250	12	55	91-7200-42
48"	48.875	28.250	12	71	91-7200-48



*\*Part numbers shown are for 72 Durometer  
(85 also available)*

Apache sealer discs are also extremely versatile and can perform in bi-directional or uni-directional applications.

As with all of Apache products, the Series MDK disc was specifically developed to perform, efficiently and reliably. To enhance durability, it's made from Reliathane, Apache's special blend of wear-resistant polyurethane.

To enhance disc life, guide discs are available with a variety of wear-resistant additives. In fact, Apache developed a proprietary chemical resistant urethane to help protect against conditions, such as hydrogen sulphide, encountered in severe environments.

## GUIDE DISC

16-48" (406-1219mm)

Size	O.D	I.D	# Holes	Weight	Part #
16"	15.250	8.750	12	5.9	91-7205-16
20"	19.250	10.875	12	8.8	91-7205-20
24"	23.250	14.125	12	19	91-7205-24
30"	29.250	18.125	12	30	91-7205-30
36"	35.250	22.250	12	48	91-7205-36
42"	41.250	26.250	12	83	91-7205-42
48"	47.250	28.250	12	123	91-7205-48



**The Series MDK sealer disc consists of a metric bolt pattern and features 12 holes.**

These discs center the sealing discs in the line, which allows the four sealing discs in the center to form a quadruple seal during displacement.

As with all of Apache products, the Series MDK disc was specifically developed to perform, efficiently and reliably. To enhance durability, it's made from Reliathane, Apache's special blend of wear-resistant polyurethane.

To enhance disc life, guide discs are available with a variety of wear-resistant additives. In fact, Apache developed a proprietary chemical resistant urethane to help protect against conditions, such as hydrogen sulphide, encountered in severe environments.



# Series UT

## SEALER DISC

6-14" (152-356mm)

Size	O.D	I.D	Weight	Part #
6"	6.375	2.500	0.5	91-4210-06
8"	8.375	3.000	1.1	91-4210-08
10"	10.500	3.625	1.7	91-4210-10
12"	12.500	4.625	3.1	91-4210-12
14"	13.875	4.625	3.6	91-4210-14

*\*Part numbers shown are for 85 Durometer (72 also available)*

### Options Available:

- 72 durometer or 86 durometer.
- Wear-resistant additives.
- High temperature material.



## GUIDE DISC

6-14" (152-356mm)

Size	O.D	I.D	Weight	Part #
6"	6.000	2.500	0.6	91-4220-06
8"	8.000	3.000	1.3	91-4220-08
10"	10.000	3.625	2.4	91-4220-10
12"	12.000	4.625	4.0	91-4220-12
14"	13.750	4.625	5.0	91-4220-14

*\*These parts are to be used on the Universal Transmitter Mandrel.*

Durable. Reliable. Effective. Apache guide discs are extremely versatile and can perform in bi-directional or uni-directional applications. All UT-style cups, discs, and sealers come with a standard bolt pattern and are designed solely for the Universal Transmitter Mandrel. Standard 72 durometer discs are used for sealing and have the ability to flip over easily for bi-directional travel. 86 durometer discs are used for scraping and cleaning the line. Guide discs are utilized to centralize and support the pig during any phase of pipeline operation.

To meet your unique requirements, simply order custom dimensions, durometer or material composition of the discs.

As with all of Apache products, the Series UT disc was specifically developed to perform, efficiently and reliably. To enhance durability, it's made from Reliathane, Apache's special blend of wear-resistant polyurethane. To enhance disc life, sealer discs are available with a variety of wear-resistant additives. In fact, Apache developed a proprietary chemical resistant urethane to help protect against conditions, such as hydrogen sulphide, encountered in severe environments.



## UT CUP

Size	I.D	Weight	Part #
6"	2.500	0.8	91-4015-06
8"	3.000	1.8	91-4015-08
10"	3.625	3.0	91-4015-10
12"	4.625	5.4	91-4015-12
14"	4.625	8.0	91-4015-14



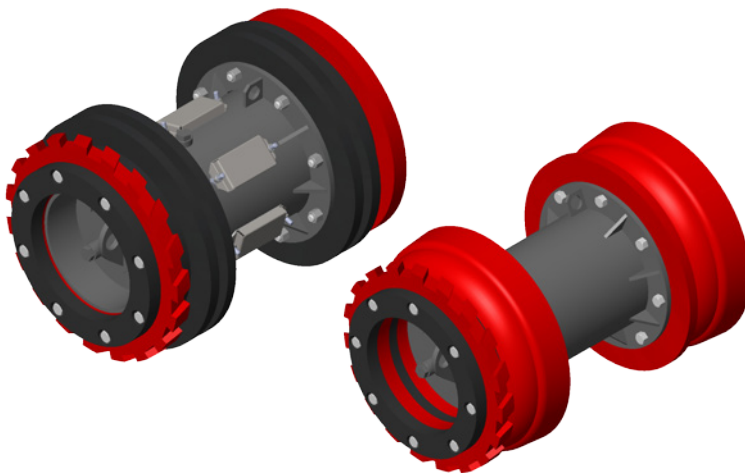
The UT Cup offers the cleaning advantages of a scraper cup and the flexibility of a conical cup. To provide a longer cup life, the wear surface of the cup is three times larger than any other UT-style cup on the market. The pressure of the pipeline product presses the cutting edge firmly against the pipe wall, ensuring an optimum seal. The flex area between the shank and the cleaning surface allows the cup to traverse reductions in the pipe bore caused by buckling of, or anomalies in, the pipeline.

# BI-DIRECTIONAL CARVER DISC

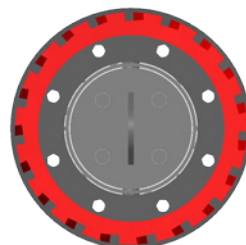
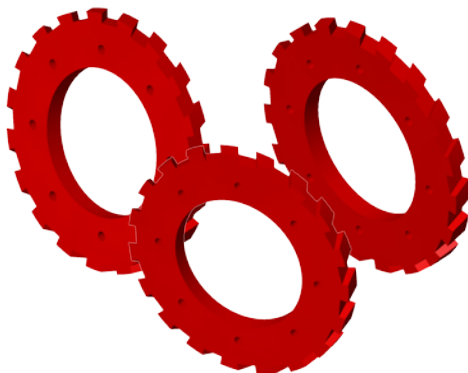
4-48" (102-1219mm)

**APACHE PIPELINE'S CARVER DISC ARE NOW AVAILABLE  
IN 4" – 48" SIZES AND CAN BE INSTALLED ON ANY OF  
APACHE'S MANDREL STYLE PIGS.**

The diagonal grooves provide unmatched cleaning capabilities as the numerous edges scrape the pipe wall removing wax, scale and other pipeline debris. Similar in design to Apache's Jetted Cup, the cavity between the carving edges permits bypass and creates turbulent flow which allows fluid to pass along the wall of the pipe to jet away wax, sand and other debris.



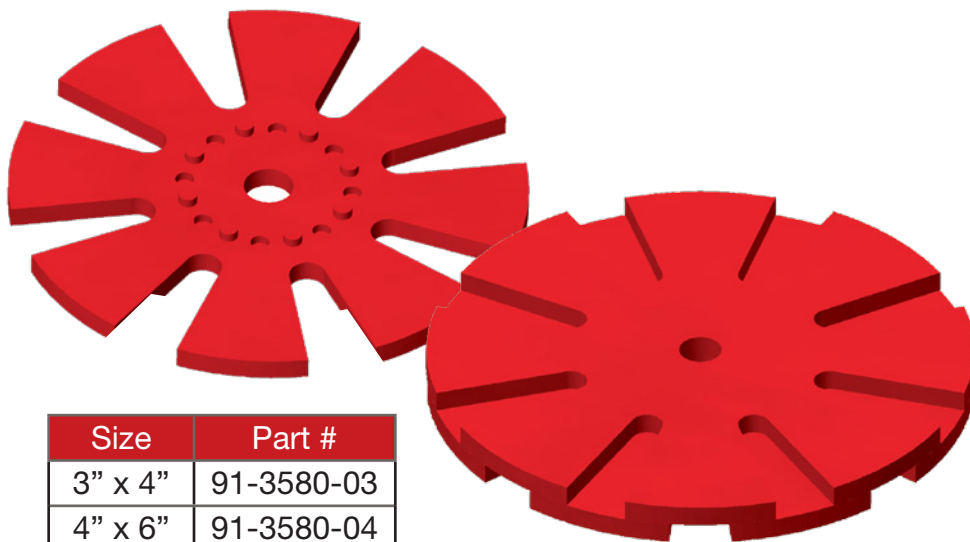
Size	O.D	I.D	Part #
4"	4.000	0.50	91-3230-04
6"	6.000	1.00	91-3230-06
8"	8.000	1.00	91-3230-08
10"	10.000	1.00	91-3230-10
12"	12.000	1.00	91-3230-12
14"	13.250	1.00	91-3230-14
16"	15.250	8.750	91-3230-16
20"	19.250	10.875	91-3230-20
24"	23.250	14.125	91-3230-24
30"	29.250	16.125	91-3230-30
36"	35.250	22.125	91-3230-36
42"	41.250	24.125	91-3230-42
48"	47.250	32.125	91-3230-48



# BI-DIRECTIONAL BUTTERFLY DISC


3-10" (76-254mm)

Apache Butterfly Discs allow the operator to run pigs in pipelines with changes in inside diameter and can be used in both Bi-Directional and Uni-Directional applications. The durometer or composition of the discs can vary to meet any special requirements.



Size	Part #
3" x 4"	91-3580-03
4" x 6"	91-3580-04
6" x 8"	91-3580-06
8" x 10"	91-3580-08

## TRANSITION SIZE:

-  3" to 4"
-  4" to 6"
-  6" to 8"
-  8" to 10"

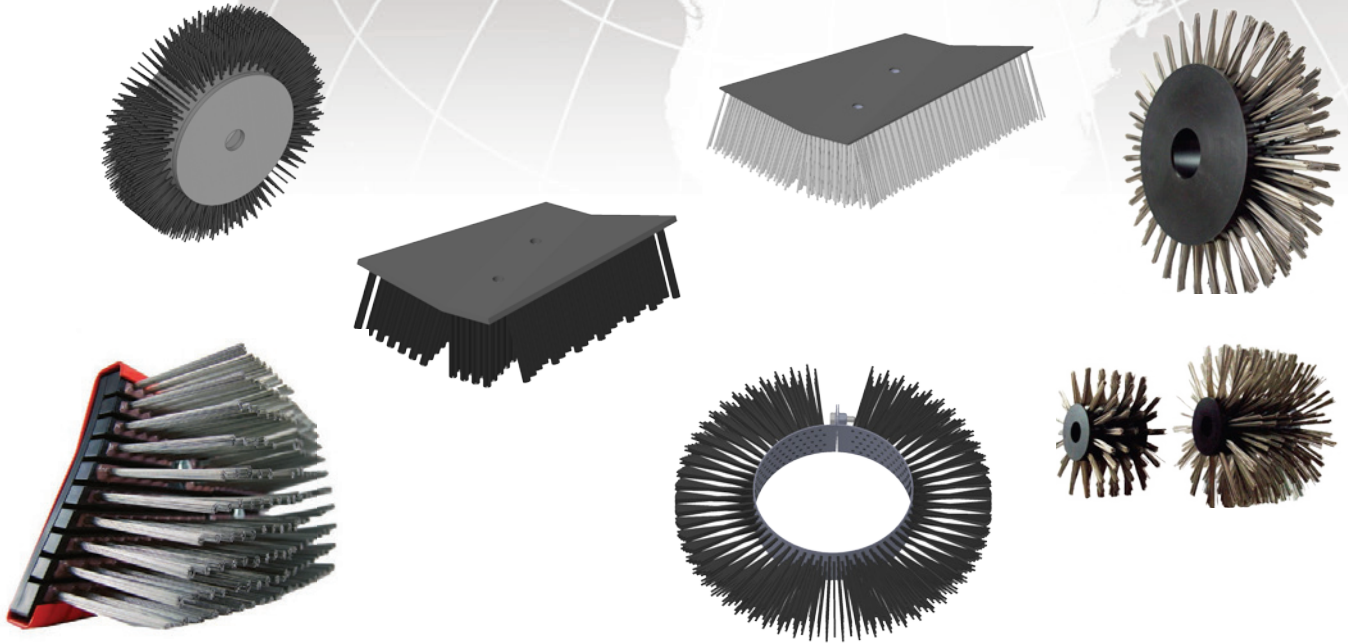
*\*Other Sizes Available On Request*

## POLYURETHANE BLADE

Available for most  
16-48" Apache Pigs



# BRUSHES



They scrub. They scour. The humble brush works incredibly hard. Apache cleaning pigs rely heavily upon brushes to clean pipelines. Here are just a few examples of the types of cleaning they do and materials they clear away when installed on a cleaning pig:

- MODERATE TO AGGRESSIVE CLEANING OF ALL OIL, GAS AND PRODUCT PIPELINES.
  - REMOVE HARD INTERNAL DEPOSITS, INCLUDING SCALE AND CORROSION.
  - ELIMINATE PARAFFIN WAX AND BLACK POWDER BUILD-UP.

Because no two pipelines have identical cleaning requirements, we offer brushes in a wide variety of materials, sizes and configurations to make certain that when the final run is completed, your pipeline receives a world class cleaning.

At Apache, we specialize in designing and manufacturing pipeline products, so we're committed to providing you with the perfect cleaning solution. We're extremely flexible, so if you would like us to create custom brushes for you, just let us know. Our standard brush designs include Wrap, Circular Flange, or Block Style



# BRUSHES

## WRAP BRUSH - MODEL BB

Look no further. Apache offers a comprehensive range of wrap brushes for your cleaning needs. All Apache Wrap Brushes mount around a pig body and secure themselves between sealing elements with fasteners. Used commonly on solid cast, all urethane pigs, the wrap brush can be quickly and easily installed.

Effective. Reliable. Durable.

### Features & Benefits:

#### FLAT

- Effective when moderate to heavy cleaning is required.
- Provides 360 degree coverage with tandem installation.
- Easily negotiates bends and anomalies in the pipe bore.

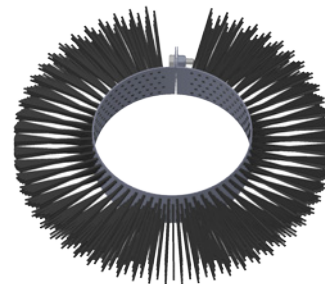
#### PENCIL

- Individual wires reach into pipeline pits, cleaning them thoroughly.
- Extremely durable, so it can be used repeatedly.

### Options Available:

- Carbon Steel or Stainless Steel trim material available for Flat wire profile.
- Plastic material available for Flat only.
- Custom trim lengths available on request.
- Custom-manufactured to suit all pig requirements.

#### Model BB Flat



Size	Part #
3"	94-0100-03
4"	94-0100-04
6"	94-0100-06
8"	94-0100-08
10"	94-0100-10
12"	94-0100-12
14"	94-0100-14
16"	94-0100-16
18"	94-0100-18
20"	94-0100-20
22"	94-0100-22
24"	94-0100-24

# BRUSHES

## CIRCULAR FLANGE - MODEL RB

Effective. Reliable. Durable. Our Model RB brush is the best general purpose pipeline cleaning solution today. With years of experience, Apache will even custom-design the optimal brush for you. The RB Brush mounts to a pig body's flange by either single or multiple bolts. Brush trims are secured to a strong, custom-made plate, not pre-perforated sheets.

### Features & Benefits:

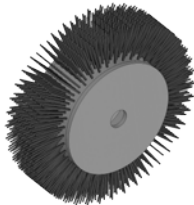
#### FLAT

- Effective when moderate to heavy cleaning is required
- Provides 360 degree coverage installation
- Excellent for bidirectional applications
- Act as centering guide in the pipeline
- Can be stacked for more aggressive cleaning
- Easily negotiates bends and anomalies in the pipe bore.

#### PENCIL

- Individual wires reach into pipeline pits, cleaning them thoroughly.
- Generally used before ILI runs to ensure a 360 degree clean.
- Extremely durable, so it can be used repeatedly
- Available in Carbon Steel or Stainless Steel trim
- Available in sizes ranging from 6" - 56"-plus.
- Its flexibility and ability to negotiate varying internal diameters make the pencil brush an excellent choice for cleaning multi diameter pipelines.

Centre Hole RB  
6-14" Flat/Pencil



Bolt Pattern RB  
16-56" Flat



Bolt Pattern RB  
16-56" Pencil



### Options Available:

- Custom trim lengths available on request.
- Trim Material – Carbon Steel, Stainless Steel & Plastic (Flat only).
- Flanges that carry the pencil brushes can be manufactured to use shorter trim lengths for scale or other problems that require a short strong brush with less flexibility.
- Alternatively, pencil brushes can feature longer trim to clean a pipeline that is, for example, partially obstructed by wax or dents or has design issues that call for the brush to flex, then resume cleaning.
- Can be custom-manufactured to suit all pig requirements.

### CENTRE HOLE

Size	Material	
	Flat Wire*	Pencil Wire**
6"	94-0940-06	94-0941-06
8"	94-0940-08	94-0941-08
10"	94-0940-10	94-0941-10
12"	94-0940-12	94-0941-12
14"	94-0940-14	94-0941-14

\* Available in SS or Plastic Trim

\*\* Available in SS

### CIRCULAR BOLT PATTERN

Size	Material	
	Flat Wire*	Pencil Wire**
6"	94-0950-06	94-0951-06
8"	94-0950-08	94-0951-08
10"	94-0950-10	94-0951-10
12"	94-0950-12	94-0951-12
14"	94-0950-14	94-0951-14
16"	94-0940-16	94-0941-16
18"	94-0940-18	94-0941-18
20"	94-0940-20	94-0941-20
22"	94-0940-22	94-0941-22
24"	94-0940-24	94-0941-24
26"	94-0940-26	94-0941-26
28"	94-0940-28	94-0941-28
30"	94-0940-30	94-0941-30
32"	94-0940-32	94-0941-32
34"	94-0940-34	94-0941-34
36"	94-0940-36	94-0941-36
42"	94-0940-42	94-0941-42
48"	94-0940-48	94-0941-48
56"	94-0940-56	94-0941-56

\* Available in SS or Plastic Trim

\*\* Available in SS

# BRUSHES

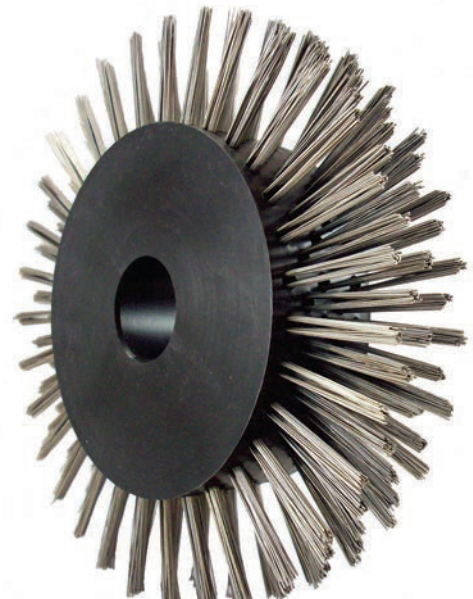
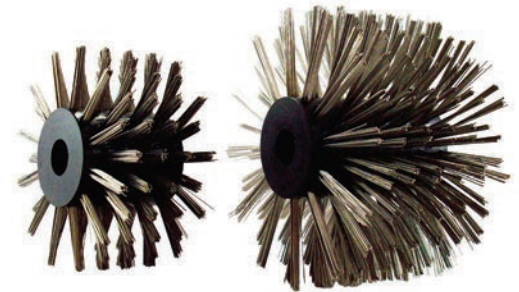
## CIRCULAR FLANGE - pitPRO™

3-16" (76-406mm)

Effective. Reliable. Durable. Our newest model of cleaning brush delivers incredible cleaning performance with outstanding durability.

With its high-density polyethylene core that features 304 stainless steel pencil brushes, the pitPRO™ pencil brush is a highly effective cleaning brush.

Size	Pattern	
	Centre Hole	Bolt Pattern
3"	94-0150-03	n/a
4"	94-0150-04	n/a
6"	94-0150-06	94-0152-06
8"	94-0150-08	94-0152-08
10"	94-0150-10	94-0152-10
12"	94-0150-12	94-0152-12
14"	94-0150-14	94-0152-14
16"	n/a	94-0152-16



### Features & Benefits:

- Available in stock sizes ranging from 3" to 16".
- Cleans powerfully, removing wax and scale.
- Individual wires reach into pipeline pits, cleaning them thoroughly.
- Extremely durable, so it can be used repeatedly.
- Its flexibility and ability to negotiate varying internal diameters make the pitPRO™ the great choice for cleaning multi diameter pipelines.

*\*18" to 56" Available On Request*

### Options Available:

- Custom trim lengths available on request .
- Custom OD's and flange sizes available.
- We can design a solution for you by simply adjusting wire diameter and length, and the number of brushes on the pig.

# BRUSHES

## BLOCK BRUSH - MODEL XB

Effective. Reliable. Durable. Designed to mount on a fixed or cantilever spring, the XB brush maintains a continuous scraping force for the removal of rust, scale and other contaminants adhering to the pipe wall. Trims are secured to a strong, custom-made plate, not pre-perforated sheets.

### Features & Benefits:

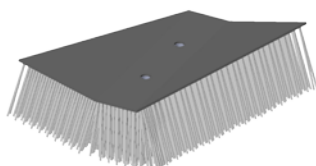
#### FLAT

- Excellent for moderate to heavy cleaning
- Cleans powerfully, removing wax and scale.
- Effective in multi diameter pipelines
- Navigate through pipeline anomalies
- Model XB fits 20" to 56" pigs (XB-S for 16"-18")

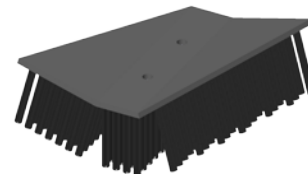
#### PENCIL

- Excellent for moderate to heavy cleaning
- Each wire acts with independent force, entering the pit and removing debris.
- Best choice for cleaning multi diameter pipelines.
- Navigate through pipeline anomalies.
- Model XB fits 20" to 56" pigs (XB-S for 16"-18")

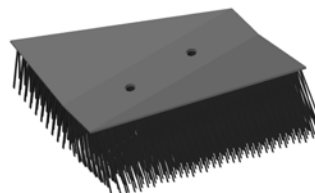
Model XB Plastic



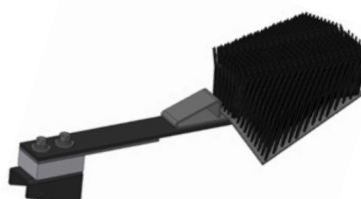
Model XB Pencil



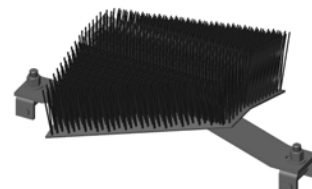
Model XB Flat



Model XB  
Cantilever Assembly



Model XB  
Fixed Assembly



Pig Size	Model	Material			
		Flat Wire	Flat Wire - SS	Flat Plastic	Pencil Wire
16" - 18"	XB-S	94-0400-00	94-0404-00	94-0408-00	94-0409-20
20" - 56"	XB	94-0410-00	94-0414-00	94-0418-00	94-0419-20

### Options Available:

- Trim Material – Carbon Steel, Stainless Steel & Plastic (Flat only).
- Custom trim lengths and diameters are available.
- XB fitted to a fixed spring assembly.
- XB fitted to a cantilever-style spring.



# BRUSHES

## BLOCK BRUSH - INTEGRITY XB

20-56" (508-1422mm)

Apache designed the Integrity XB specifically to help operators thoroughly clean any internal pits in preparation for ILI runs or Inhibitor applications.

Also proven as a proficient and aggressive cleaning tool for day to day operations, it utilizes unique Pencil Brush Technology. Each brush features stiff 22 gauge memory wire bristles at the front for heavy scraping and longer, flexible 25 gauge bristles at the rear for deep cleaning. High grade tinned hardened & tempered steel memory wire provide excellent cleaning performance & corrosion resistance.

### Features & Benefits:

- 360° coverage of rebound memory wire.
- For use in 20" through 56" pipelines.
- Premier brush for pre-inspection cleaning and inhibitor applications.
- Each brush uses more than 7,000 hardened, tempered steel wires to deliver outstanding cleaning performance.
- To enhance cleaning effectiveness and brush life, all parts are corrosion resistant. The back plate is powder coated, every individual steel wire is tin-coated, and the base consists of high-grade urethane.
- Designed to remove deposits from internal pits while insuring excellent general purpose cleaning.
- Pit cleaning bristles improve effectiveness of corrosion inhibitors.

Size	Part #
20" - 56"	94-0419-50



### Options Available:

- Trim Material – Carbon Steel or Stainless Steel.
- Custom trim lengths and diameters are available.
- XB fitted to a fixed spring assembly.
- XB fitted to a cantilever-style spring, wear-compensating assembly.
- The innovative, Integrity XB is truly unique. If you would like us to provide a customized Integrity XB brush for you, just let us know.

