

Series M

GUIDE DISCS

16-48" (406-1219mm)

Durable. Reliable. Effective.

Apache guide discs are extremely versatile and can perform in bi-directional or uni-directional applications.

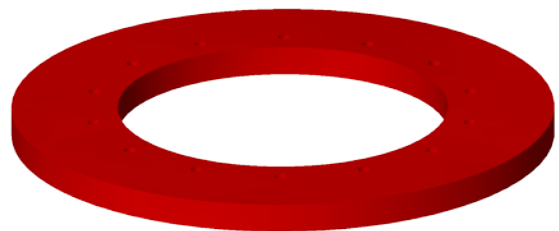
To meet your unique requirements, simply order custom dimensions, durometer or material composition of the discs.

As with all of Apache products, the Series M disc was specifically developed to perform, efficiently and reliably. To enhance durability, it's made from Reliathane, Apache's special blend of wear-resistant polyurethane.

To enhance disc life, guide discs are available with a variety of wear-resistant additives. In fact, Apache developed a proprietary chemical resistant urethane to help protect against conditions, such as hydrogen sulphide, encountered in severe environments.

***Series M parts mount on different style pigs than our Series C.**

Size	O.D	I.D	Weight	Part #
16"	15.250	6.750	7.2	91-5220-16
18"	17.250	8.375	8.7	91-5220-18
20"	19.250	8.375	13	91-5220-20
22"	21.250	10.375	15	91-5220-22
24"	23.250	10.375	19	91-5220-24
26"	25.250	12.375	21	91-5220-26
28"	27.250	12.375	30	91-5220-28
30"	29.250	15.375	32	91-5220-30
32"	31.250	15.375	41	91-5220-32
34"	33.250	17.375	45	91-5220-34
36"	35.250	17.375	56	91-5220-36
38"	37.250	20.875	57	91-5220-38
40"	39.250	20.875	66	91-5220-40
42"	41.250	20.875	86	91-5220-42
48"	47.250	24.875	131	91-5220-48



Options Available:

- Wear-resistant additives.
- Custom I.D./O.D. bolt pattern and thickness available on request.
- High temperature material.