

Series C

GUIDE DISCS

16-48" (406-1219mm)

Durable. Reliable. Effective.

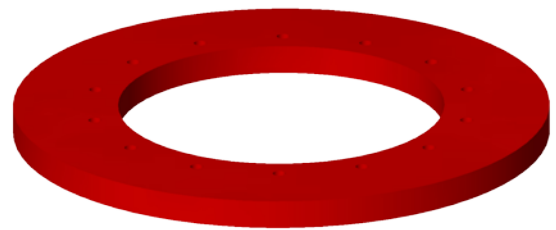
Apache guide discs are extremely versatile and can perform in bi-directional or uni-directional applications.

As with all of Apache products, the Series C disc was specifically developed to perform, efficiently and reliably. To enhance durability, it's made from Reliathane, Apache's special blend of wear-resistant polyurethane.

To enhance disc life, guide discs are available with a variety of wear-resistant additives. In fact, Apache developed a proprietary chemical resistant urethane to help protect against conditions, such as hydrogen sulphide, encountered in severe environments.

***Series C parts mount on different style pigs than our Series M.**

Size	O.D	I.D	Weight	Part #
16"	15.250	8.750	6.0	91-3220-16
18"	17.250	10.875	6.9	91-3220-18
20"	19.250	10.875	11	91-3220-20
22"	21.250	10.875	14	91-3220-22
24"	23.250	14.125	15	91-3220-24
26"	25.250	14.125	19	91-3220-26
28"	27.250	16.125	25	91-3220-28
30"	29.250	16.125	31	91-3220-30
32"	31.250	20.125	32	91-3220-32
34"	33.250	20.125	39	91-3220-34
36"	35.250	22.125	45	91-3220-36
38"	37.250	22.125	54	91-3220-38
40"	39.250	22.125	63	91-3220-40
42"	41.250	24.250	76	91-3220-42
48"	47.250	32.125	97	91-3220-48



Options Available:

- Wear-resistant additives.
- Custom I.D./O.D. bolt pattern and thickness available on request.
- High temperature material.