

ALL URETHANE

HURRICANE LEAD PIGS - solid cast

3-12" (76-305mm)

Stop corrosion in its tracks. That's what we set out to do when we developed the Hurricane LP-FP double-pig train method. As every pipeline engineer knows, coating the interior of the line with a quality corrosion inhibitor is one of the best ways to keep it from corroding. The challenge? How to apply inhibitor in a controlled manner.

THE LP ROLE

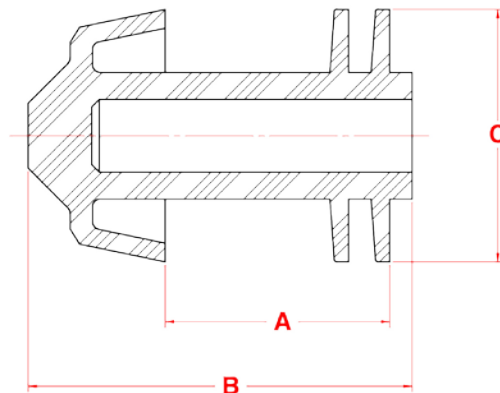
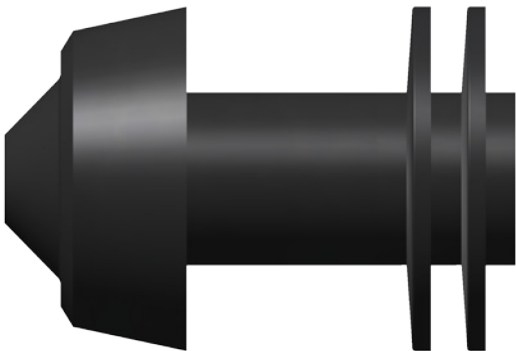
The Hurricane Lead Pig (LP) acts as the lead pig of a double-pig train. It carries inhibitor or biocide treatment, allowing minimal by-pass. The inhibitor is contained between the LP and the Hurricane Filming Pig (FP) pig. As the train moves through the line, the FP leaves a film of inhibitor on the pipe wall.

THE FP ROLE

The design of the dual-durometer Hurricane FP is truly unique. It features a hollow front mandrel with two port holes in the center of the mandrel. This allows the inhibitor to travel to the front hollow mandrel and through the two port holes on either side of the mandrel. The inhibitor is then trapped between the front conical cup, and back two soft discs to leave a film of inhibitor on the pipe wall.

Similar in appearance to the Hurricane Filming Pig, the Hurricane LP is manufactured with 72 durometer urethane and has a rear hollow cavity.

The Hurricane LP-FP method: the ideal solution for controlled, efficient pipe wall filming.



Size	A	B	C	Weight	Part #
3"	2.500	4.875	3.375	0.7	74-0572-03S
4"	3.625	6.250	4.375	1.2	74-0572-04S
6"	5.375	8.750	6.500	3.4	74-0572-06S
8"	7.625	11.750	8.500	9.3	74-0572-08S
10"	9.625	14.125	10.625	15	74-0572-10S
12"	10.125	15.375	12.500	25	74-0572-12S

Features & Benefits:

- Lightweight – no metal components.
- Can be launched in most common pigging valves.
- Standard hollow core to house an electronic transmitter.

Designed to negotiate 1.5D bends, the Lead Pig moves reliably through piping systems.



Check out apachepipe.com/animations.html for videos on lead pigs.