

# ALLURETHANE

## HURRICANE FILMING PIGS - solid cast

3-12" (76-305mm)

Stop corrosion in its tracks. That's what we set out to do when we developed the Hurricane LP-FP double-pig train method. As every pipeline engineer knows, coating the interior of the line with a quality corrosion inhibitor is one of the best ways to keep it from corroding. The challenge? How to apply inhibitor in a controlled manner.

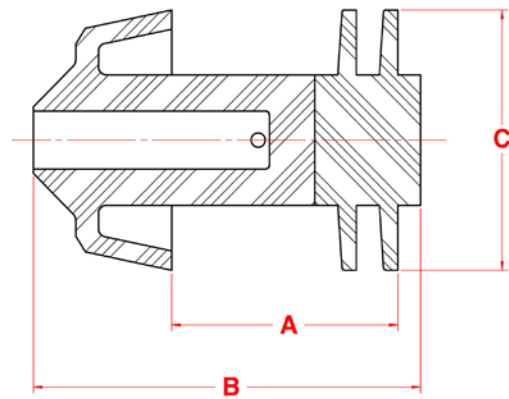
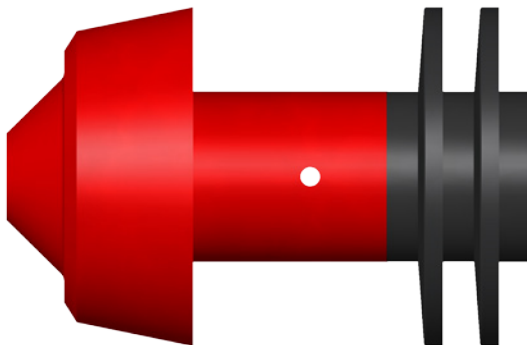
### THE LP ROLE

The Hurricane Lead Pig (LP) acts as the lead pig of a double-pig train. It carries inhibitor or biocide treatment, allowing minimal by-pass. The inhibitor is contained between the LP and the Hurricane Filming Pig (FP) pig. As the train moves through the line, the FP leaves a film of inhibitor on the pipe wall.

### THE FP ROLE

The design of the dual-durometer Hurricane FP is truly unique. It features a hollow front mandrel with two port holes in the center of the mandrel. This allows the inhibitor to travel to the front hollow mandrel and through the two port holes on either side of the mandrel. The inhibitor is then trapped between the front conical cup, and back two soft discs to leave a film of inhibitor on the pipe wall.

The Hurricane LP-FP method: the ideal solution for controlled, efficient pipe wall filming.



Size	A	B	C	Weight	Part #
3"	2.500	4.875	3.375	1.0	74-0462-03
4"	3.625	6.250	4.375	2.0	74-0462-04
6"	5.375	8.750	6.500	4.0	74-0462-06
8"	7.625	11.750	8.500	10	74-0462-08
10"	9.625	14.125	10.625	20	74-0462-10
12"	10.125	15.375	12.500	32	74-0462-12

### Features & Benefits:

- Lightweight – no metal components.
- Can be launched in most common pigging valves.

Designed to negotiate 1.5D bends, the Filming Pig moves reliably through piping systems.



Check out [apachepipe.com/animations.html](http://apachepipe.com/animations.html) for videos on filming pigs.