

APACHE PIPELINE'S CARVER DISC ARE NOW AVAILABLE IN SIZES 4" – 48" AND CAN BE INSTALLED ON ANY OF APACHE'S MANDREL STYLE PIGS.

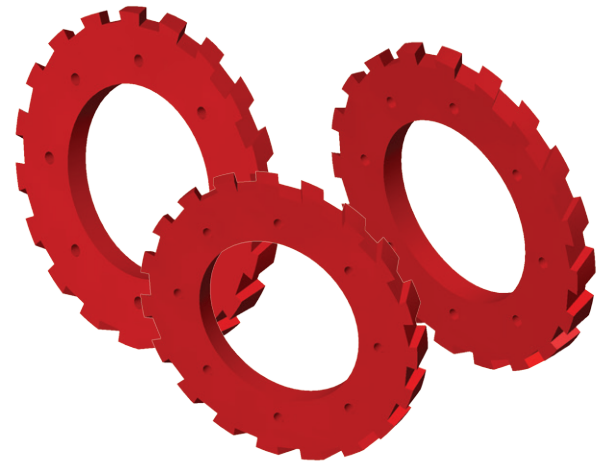
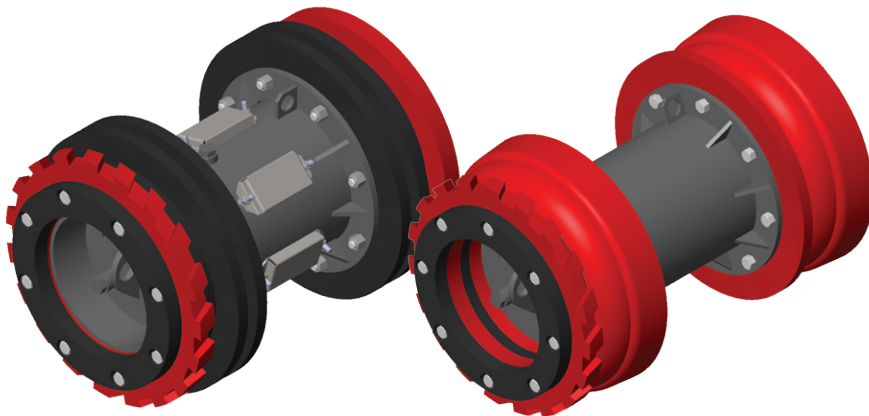
The diagonal grooves provide unmatched cleaning capabilities as the numerous edges scrape the pipe wall removing wax, scale and other pipeline debris. Similar in design to Apache's Jetted Cup, the cavity between the carving edges permits bypass and creates turbulent flow which allows fluid to pass along the wall of the pipe to jet away wax, sand and other debris.

CARVER DISCS

Are manufactured from Apache's Reliathane urethane, synonymous throughout the industry for its world-class durability and performance.

SIZE	O.D	I.D	PART #
------	-----	-----	--------

4"	4.000	0.50	91323004
6"	6.000	1.00	91323006
8"	8.000	1.00	91323008
10"	10.000	1.00	91323010
12"	12.000	1.00	91323012
14"	13.250	1.00	91323014



SIZE	O.D	I.D	PART #
------	-----	-----	--------

16"	15.250	8.750	91323016
20"	19.250	10.875	91323020
24"	23.250	14.125	91323024
30"	29.250	16.125	91323030
36"	35.250	22.125	91323036
42"	41.250	24.125	91323042
48"	47.250	32.125	91323048

