

X300-2C Transmitter



The X300-2C is a TRAXALL-compatible electromagnetic pipeline pig-tracking transmitter that offers both programmable frequency and power control through CDI's proprietary FieldLink wireless communications system.

Frequency Control allows the operator to configure the transmitter to one of TRAXALL's seven colorized frequencies, or the 22 Hz legacy frequency for backward compatibility with CDI's CD42 receiver or competitive receivers.

Power Control allows the operator to directly manage a tradeoff between X300 range vs. battery life. For example, you can set output power to maximum for short runs/long range, or reduce output power for long runs/long battery life.

FieldLink is CDI's proprietary wireless communications network. Each X300-2C transmitter comes with a built-in radio frequency antenna. By connecting a supplied radio frequency USB key, any Windows PC or laptop can be used to configure the X300.

Standard Features

- Programmable frequency
- Pulse or continuous transmission
- Available for rent or purchase from CDI
- Flanged stainless steel transmitter body
- Two alkaline 1.5V Type C-cell batteries
- One-year warranty
- Spare O-rings

Specifications

- Pipeline sizes: 6 in. – 12 in. [152mm – 305mm]
- Operating Pressure: 2,500 psi [172 bar]
- Operating Temperature: 40°F to 140°F [-40°C to 60°C]
- Dimensions 5.765 in. [146.5mm] x 1.74 in. [44.2mm]
- Battery Life:
 - Legacy pulsing mode: 1,000 hours
 - Traxall continuous mode: 200 hours
- Material: 304 Stainless Steel
- Range (open air):
 - 50 ft [15 m] (w/lithium batteries)
 - 39 ft [12 m] (w/alkaline batteries)

FieldLink

Wireless communications and configuration!



TRAXALL family of transmitters are patent pending

NOW AVAILABLE AT



1575 - 90 Ave Edmonton, AB Canada T6P 0E2
Ph: 780.416.4850 | Fax: 780.416.4829 | apachepipe.com | Email: sales@apachepipe.com

world class world wide

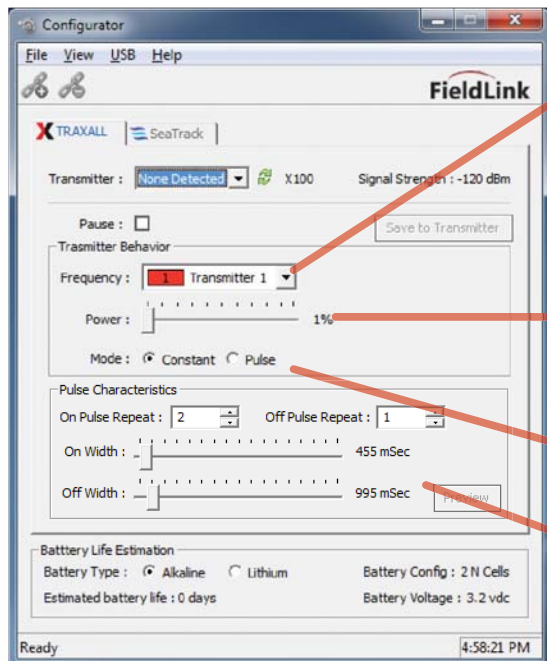


PHO-X300-09/14

FieldLink Configurator Program



FieldLink Configurator provides wireless configuration of CDI's TRAXALL "X Series" transmitters. FieldLink Configurator communicates to FieldLink-compatible devices via a proprietary radio frequency USB dongle. Simply plug it in and go!



Frequency

Choose one of seven TRAXALL primary frequencies or industry-standard 22 Hz through this simple drop-down menu

Power

CDI X-Series transmitters provide true output power variability, putting the tradeoff of battery life vs. transmission power directly into the hands of end users. FieldLink Configurator's power slider lets you adjust transmitter power from 1% to 99% of maximum. Transmitter estimated battery life is dynamically updated as the slider is moved. This powerful capability allows pipeline pigging professionals to tailor a transmitter for maximum range and optimum battery life on a per-run basis.

Pulse or Continuous Transmission Mode

Select either pulse or continuous transmission by radio buttons. Estimated battery life will change to reflect the new power requirements.

Pulse Mode Characteristics

Define your own pulse pattern and upload to transmitter. Specify ON/OFF times in milliseconds, as well as repeat cycles and durations for an unprecedented transmission signature. With FieldLink, pattern possibilities are almost infinite.

Requirements

- PC or laptop computer with Windows® 7 operating system, 32-bit or 64-bit
- Configurator software*
- FieldLink USB dongle*
- Adobe® Reader®

* Supplied by CDI Inc.

