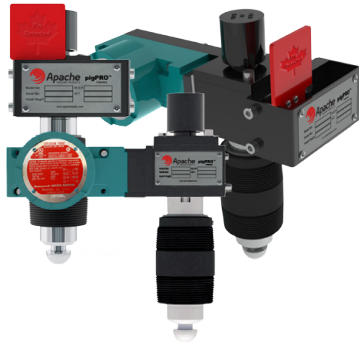


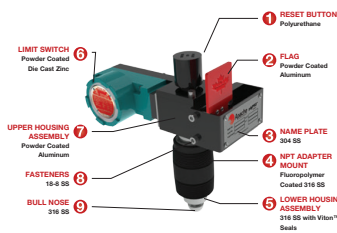
PIG PASSAGE INDICATORS



**pigPRO™
Info**
Pg. 1-2 & 1-3



**pigPRO™
Series 55**
Pg. 1-7



**Material
List**
Pg. 1-4



**pigPRO™
Series 57**
Pg. 1-8

SERIES	INDICATOR	SEAL MATERIAL
5 - Intrusive	3 - Visual/Electrical 5 - Electrical 7 - Visual	0 - Viton™ (FKM) 1 - NBR (N)M 2 - Viton™ ED (FKM) 5 - EPDM

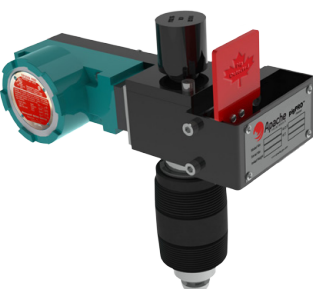
53-0000-00

CONNECTION TYPE	CONNECTION MATERIAL	EXTENSION	WALL THICKNESS
0 - 2" NPT Nipple (for 3000P TDL) 1 - 2" NPT Nipple (for 8000P TDL) 2 - 150# RF Flange 3 - 300# RF Flange 4 - 800# RF Flange 5 - 9150# RF Flange 6 - 800# RTJ Flange 7 - 9150# RTJ Flange 9 - TDW Retrofit	0 - 316L 2 - A350 LFP 3 - A350 4 - Duplex Stainless 5 - Inconel Alloy	0 - None 01 - 0.625" 2 - 2' Foot 4 - 4' Foot 6 - 6' Foot 8 - 8' Foot	00 - up to 0.625" 01 - 0.625" to 1.125" 4 - 1.125" to 1.625" 6 - 1.625" to 2.125" 8 - 2.125" to 2.625"

**Part #
Selection**
Pg. 1-5



**pigPRO™
Flange**
Pg. 1-9



**pigPRO™
Series 53**
Pg. 1-6



**pigPRO™
Extension
Pole**
Pg. 1-10

p i g P R O™

PIG PASSAGE INDICATORS pigPRO™ Series

The Intrusive Pig Signaler

The Apache pigPRO™ are manufactured in our Edmonton, Alberta, Canada facility. From Canadian workmanship to the patented fluid seal design, our pigPRO™ are depended upon by pipeline operators the world over.

**When you see the pigPRO™ name,
we guarantee it will indicate more than just quality.**

Detecting cleaning pigs, accurately and reliably.

At Apache, we know that knowledge is power. That's why we want to make certain that when a customer is pigging a pipeline, they will always know when the pig has passed a critical point in the pipeline.

To achieve that, we designed the pigPRO™ Series, a patented line of intrusive pig passage indicators that reliably detect the precise location of a cleaning pig as it travels within the pipeline network.

How does it work?

The pigPRO indicator is permanently installed on pig launchers and receivers, or very close to a pump station. By doing so, operators are notified the instant that the pig has left the launcher or arrived in the receiver.

The system is fitted with a plunger that is then inserted into the pipe, physically penetrating the pipe bore. When a pipeline cleaning pig passes, it actuates the plunger, which activates either a visual or electrical indicator, or both. The instant that the indicator is displayed, the pipeline cleaner's precise location is revealed.

The Apache pigPRO™ are an INTRUSIVE model as the plunger actually penetrates the pipe bore. The protruding PLUNGER is actuated by the passage of a pipeline cleaner thereby activating an indicator.

- Bi-directional activation is a standard feature of all our indicator types
- All indicators are manufactured for a specific operating pressure and wall thickness
- Can be flange mounted or 2" NPT mounted
- All pigPRO™ can be modified to mount into most competitor's T.O.L.

Components:

Apache's unique patented FLUID SEAL DESIGN does not allow paraffin or other objects to obstruct the operational mechanisms thus ensuring positive indication of the pig's passage. There are no gears in the trigger mechanism and all materials conform to NACE standard MR0175 / ISO 15156.

1575 - 90 Ave Edmonton, AB Canada T6P 0E2

1-2

Ph: 780.416.4850 | Fax: 780.416.4829 | apachepipe.com | Email: sales@apachepipe.com

world class world wide

p i g P R O ™

PIG PASSAGE INDICATORS pigPRO™ Series

The Intrusive Pig Signaler

EASILY INSTALLED WITHOUT DISRUPTING PRODUCTION

Every model in the pigPRO series is easily installed, even while the pipeline is on-stream. So preparing for critical pipeline cleaning doesn't disrupt critical production.

FEWER MOVING PARTS EASE INSTALLATION & REDUCE RISK

Most pig indicators feature trigger mechanisms with many moving parts that make it more difficult to align during installation. As a result they are frequently damaged. With the pigPRO's hemispherical design, these issues are completely eliminated, saving time and money. To ensure that the indicator is properly adjusted for the individual pipeline, hemispherical plunger sensitivity adjustment and hemispherical plunger penetration adjustment are standard features.

BI-DIRECTIONAL ACTIVATION

Every pigPRO indicator is bi-directional, so it is triggered by a pig traveling in either direction. Although a pig is rarely required to travel in the opposite direction of the flow in a pipeline while it is on-stream, this capability can be useful when servicing offline pipelines.

DEBRIS OR NO DEBRIS, PIGPRO PERFORMS

When it comes to indicating pig passage, wax or debris in the line, most pig indicators simply can't operate. That's not the case with the pigPRO, which operates reliably, regardless of wax. It's specially designed to prevent debris from obstructing its operational mechanisms, so a passing pig is always indicated.

UNIVERSAL, ADAPTABLE

Our ability to retrofit to most mounts makes the Apache pigPRO completely versatile.

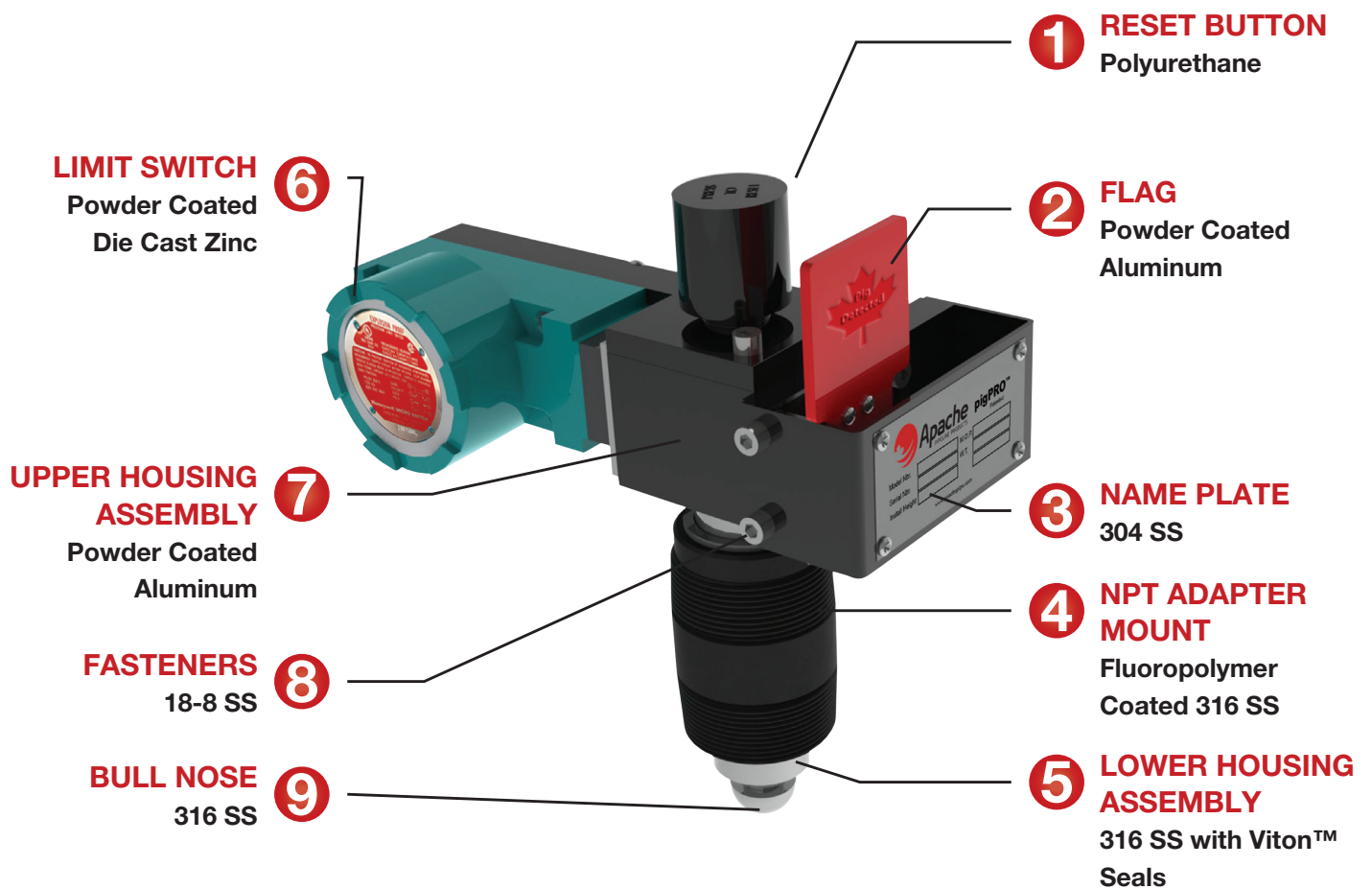
PRIMARY SYSTEM COMPONENTS

Every Apache pigPRO pig passage indicator includes a thread-mounting nipple, standard lower housing with fluorocarbon O-rings, and a hemispherical plunger with a flag assembly.

Designed for easy adjustment onsite, even while on-stream.

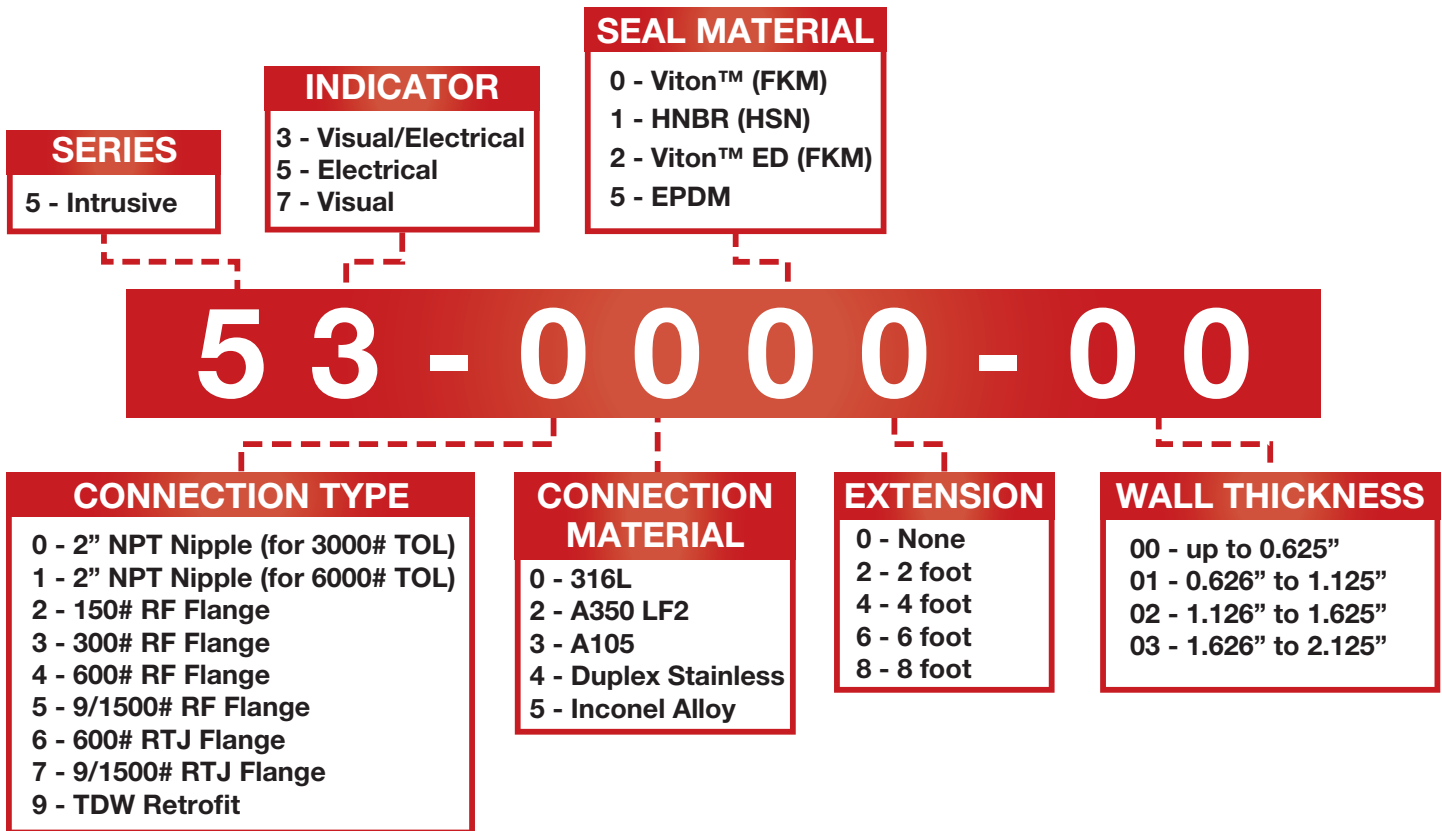
piGPRO™

MATERIAL LIST



PIG PRO™

PART NUMBER SELECTION

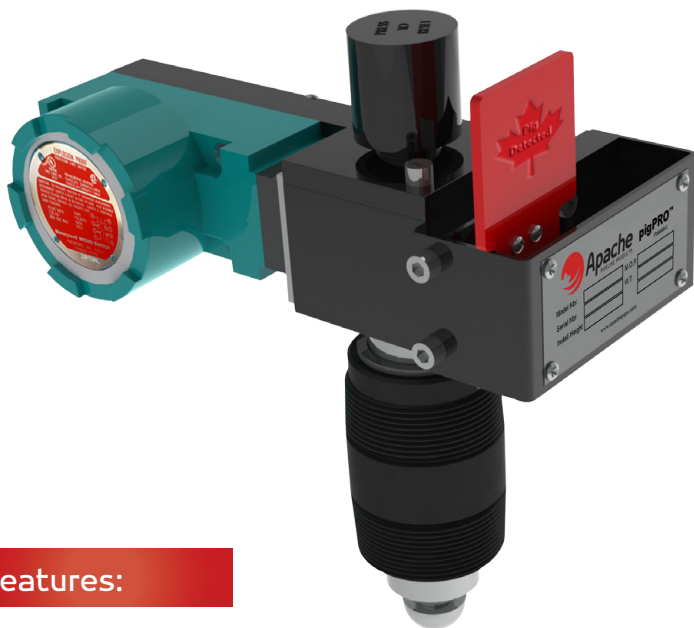


p i g P R O™

Series 53

Visual/Electrical Indication

Manual/Auto Reset



THE MODEL 53 IS A COMBINATION VISUAL AND ELECTRICAL INDICATOR WITH MANUAL AND AUTOMATIC RESET.

Offering both visual and electrical indicator capabilities and manual and automatic reset features, the Model 53 is the most versatile member of Apache's pigPRO™ Series, a patented line of intrusive pig passage indicators that reliably detect the precise location of a cleaning pig as it travels within the pipeline network. When a cleaning pig passes the system's intruding plunger, it activates the plunger and triggers a visual flag indicator, signaling the pig's location.

Features:

Base Model 53 includes a thread mounting nipple, standard lower housing with fluorocarbon O-Rings, hemispherical plunger with a flag assembly and weather sealed & explosion proof limit switch. The switch employed on this model is NEMA rated, UL listed and CSA certified to suit most applications.

Options:

Flange Mount - Flange base models are manufactured to mount to existing flanged connections and are available in class 150, 300, 600 or 900 ANSI flanges. Conversions kits are also available which enable installation onto the mountings of other manufacturers.

Extension Pole:

Aluminum extensions can be attached to enable detection of the pigs passage on buried pipelines. All pressure sealing components remain below the extension module. Available in lengths 2' to 8'.



Check out apachepipe.com/animations.html for videos on pigPRO™

1575 - 90 Ave Edmonton, AB Canada T6P 0E2

p i g P R O™

Series 55

Electrical Indication

Auto Reset



THE MODEL 55 IS AN ELECTRICAL INDICATOR WITH MANUAL AND AUTOMATIC RESET.

With its optional manual and automatic reset capabilities, the Model 55 is a highly sought after member of Apache's pigPRO™ Series, a patented line of intrusive pig passage indicators that reliably detect the precise location of a cleaning pig as it travels within the pipeline network. When a cleaning pig passes the system's intruding plunger, it activates the plunger and triggers a visual flag indicator, signaling the pig's location.

Features:

Base Model 55 includes a thread mounting nipple, standard lower housing with fluorocarbon O-Rings, hemispherical plunger and weather sealed & explosion proof limit switch. The switch employed on this model is NEMA rated, UL listed and CSA certified to suit most applications.

Options:

Flange Mount -Flange base models are manufactured to mount to existing flanged connections and are available in class 150, 300, 600 or 900 ANSI flanges. Conversions kits are also available which enable installation onto the mountings of other manufacturers.

Extension Pole:

Aluminum extensions can be attached to enable detection of the pigs passage on buried pipelines. All pressure sealing components remain below the extension module. Available in lengths 2' to 8'.



Check out apachepipe.com/animations.html for videos on pigPRO™

1575 - 90 Ave Edmonton, AB Canada T6P 0E2

Ph: 780.416.4850 | Fax: 780.416.4829 | apachepipe.com | Email: sales@apachepipe.com

world class world wide

p i g P R O™

Series 57

Visual Indication

Manual Reset



THE BASE MODEL 57 IS A VISUAL FLAG INDICATOR WITH MANUAL RESET.

It is a popular member of Apache's pigPRO Series, a patented line of intrusive pig passage indicators that reliably detect the precise location of a cleaning pig as it travels within the pipeline network. When a cleaning pig passes the system's intruding plunger, it activates the plunger and triggers a visual flag indicator, signaling the pig's location.

Features:

Our most popular pigPRO™, the base Model 57 includes a thread mounting nipple, standard lower housing with fluorocarbon O-Rings, hemispherical plunger with a flag assembly.

Options:

Flange Mount -Flange base models are manufactured to mount to existing flanged connections and are available in class 150, 300, 600 or 900 ANSI flanges. Conversions kits are also available which enable installation onto the mountings of other manufacturers.

Extension Pole:

Aluminum extensions can be attached to enable detection of the pigs passage on buried pipelines. All pressure sealing components remain below the extension module. Available in lengths 2' to 8'.



Check out apachepipe.com/animations.html for videos on pigPRO™

1575 - 90 Ave Edmonton, AB Canada T6P 0E2

1-8

Ph: 780.416.4850 | Fax: 780.416.4829 | apachepipe.com | Email: sales@apachepipe.com

world class world wide

p i g P R O™

FLANGE MOUNT

4-14" (102-356mm)

Flange base models are manufactured to mount to existing flanged connections.

**Available in class
150, 300, 600 or 900
ANSI flanges.**



p i g P R O™

EXTENSION POLE

4-14" (102-356mm)



Aluminum extensions can be attached to enable detection of the pig's passage on buried pipelines.

All pressure sealing components remain below the extension module.

Available in lengths 2 to 8'.

**Extension poles can be used
with any Apache pigPRO™**