

**SERIES**

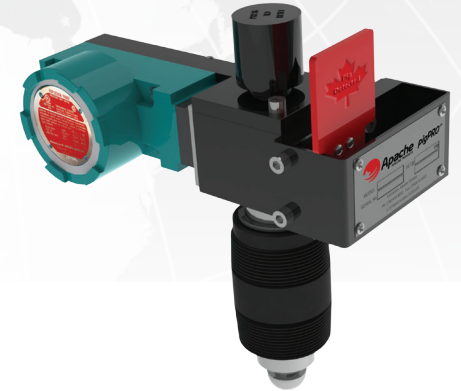
5 - Intrusive

**INDICATOR**

3 - Visual/Electrical  
5 - Electrical  
7 - Visual

**SEAL MATERIAL**

0 - Viton™ (FKM)  
1 - HNBR (HSN)  
2 - Viton™ ED (FKM)  
5 - EPDM



**5 3 - 0 0 0 0 - 0 0**

**CONNECTION TYPE**

0 - 2" NPT Nipple (for 3000# TOL)  
1 - 2" NPT Nipple (for 6000# TOL)  
2 - 150# RF Flange  
3 - 300# RF Flange  
4 - 600# RF Flange  
5 - 9/1500# RF Flange  
6 - 600# RTJ Flange  
7 - 9/1500# RTJ Flange  
9 - TDW Retrofit

**CONNECTION MATERIAL**

0 - 316L  
2 - A350 LF2  
3 - A105  
4 - Duplex Stainless  
5 - Inconel Alloy

**EXTENSION**

0 - None  
2 - 2 foot  
4 - 4 foot  
6 - 6 foot  
8 - 8 foot

**WALL THICKNESS**

00 - up to 0.625"  
01 - 0.626" to 1.125"  
02 - 1.126" to 1.625"  
03 - 1.626" to 2.125"

1575 - 90 Ave Edmonton, AB Canada T6P 0E2  
Ph: 780.416.4850 | Fax: 780.416.4829 | [apachepipe.com](http://apachepipe.com) | Email: [sales@apachepipe.com](mailto:sales@apachepipe.com)

**world class world wide**

