

REPLACEMENT PARTS

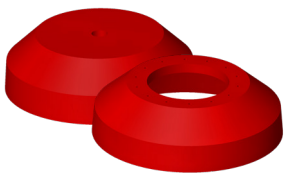
CUPS



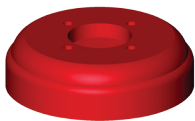
C - Scraper
2-14" Pg. 5-2
16-48" Pg. 5-3



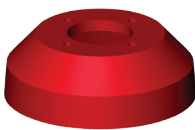
JC - Jetted
2-14" Pg. 5-4
16-48" Pg. 5-5



M - Conical
3-14" Pg. 5-6
16-48" Pg. 5-7



UT-C Cup
6 - 14"
Pg. 5-8



UT-M Cup
6 - 14"
Pg. 5-9

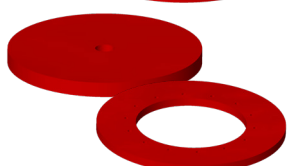
DISCS



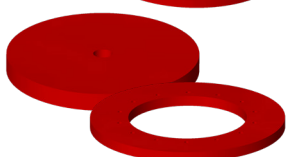
C - Sealer
3-14" Pg. 5-10
16-48" Pg. 5-11



C - Guide
3-14" Pg. 5-12
16-48" Pg. 5-13



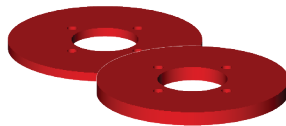
M - Sealer
3-14" Pg. 5-14
16-48" Pg. 5-15



M - Guide
3-14" Pg. 5-16
16-48" Pg. 5-17



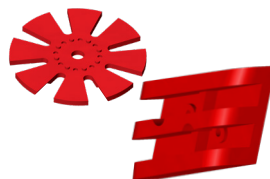
MDK
16 - 48"
Pg. 5-18



UT Sealer/Guide Disc
6 - 14"
Pg. 5-19



CARVER Disc
3 - 48"
Pg. 5-20



Butterfly Disc & Plow Blade
3 - 10"
Pg. 5-21

BRUSHES



Wrap Brush
Model BB
Pg. 5-22



Circular Flange
Model RB
Pg. 5-23



Circular Flange
pitPRO™
Pg. 5-24



Block Brush
Model XB
Pg. 5-25



Block Brush
Integrity XB
Pg. 5-26

Scraper Cup

2-14" (51-356mm)

Durable. Reliable. Effective.

The unique design of the Series C cup offers the cleaning advantages of a scraper cup and the flexibility inherent in a conical cup.

To provide a longer cup life, Apache made certain that the wear surface of the cup is three times larger than any other scraper cup on the market. Plus, the pressure of the pipeline product presses the cutting edge firmly against the pipe wall, ensuring an optimum seal.

Another advantage is that the flex area between the shank and the cleaning surface allows the cup to traverse reductions in the pipe bore caused by buckling of, or anomalies in, the pipeline. This means that runs go as planned, without delay.

As with all of Apache products, the Series C cup was specifically developed to perform, efficiently and reliably. To enhance durability, it's made from Reliathane, Apache's special blend of wear-resistant polyurethane.



Size	O.D	I.D	Part #
2"	2.125	0.50	91-3015-02
3"	3.375	0.50	91-3015-03
4"	4.375	0.50	91-3015-04
6"	6.375	1.00	91-3015-06
8"	8.500	1.00	91-3015-08
10"	10.625	1.00	91-3015-10
12"	12.750	1.00	91-3015-12
14"	13.875	1.00	91-3015-14

Options Available:

- Custom I.D. and bolt patterns available on request.
- Different durometers available on request.
- High temperature material.

Scraper Cup

16-48" (406-1219mm)

Durable. Reliable. Effective.

The unique design of the Series C cup offers the cleaning advantages of a scraper cup and the flexibility inherent in a conical cup.

To provide a longer cup life, Apache made certain that the wear surface of the cup is three times larger than any other scraper cup on the market. Plus, the pressure of the pipeline product presses the cutting edge firmly against the pipe wall, ensuring an optimum seal.

Another advantage is that the flex area between the shank and the cleaning surface allows the cup to traverse reductions in the pipe bore caused by buckling of, or anomalies in, the pipeline. This means that runs go as planned, without delay.

As with all of Apache products, the Series C cup was specifically developed to perform, efficiently and reliably. To enhance durability, it's made from Reliathane, Apache's special blend of wear-resistant polyurethane.



Size	O.D	I.D	Part #
16"	16.000	8.750	91-3015-16
18"	17.875	10.875	91-3015-18
20"	19.875	10.875	91-3015-20
22"	21.875	10.875	91-3015-22
24"	23.875	14.125	91-3015-24
26"	25.875	14.125	91-3015-26
28"	27.875	16.125	91-3015-28
30"	29.875	16.125	91-3015-30
32"	32.000	20.125	91-3015-32
34"	34.000	20.125	91-3015-34
36"	36.000	22.125	91-3015-36
42"	42.125	24.125	91-3015-42
48"	48.500	32.125	91-3015-48

Options Available:

- Custom I.D. and bolt patterns available on request.
- Different durometers available on request.
- High temperature material.

Jetted Cup

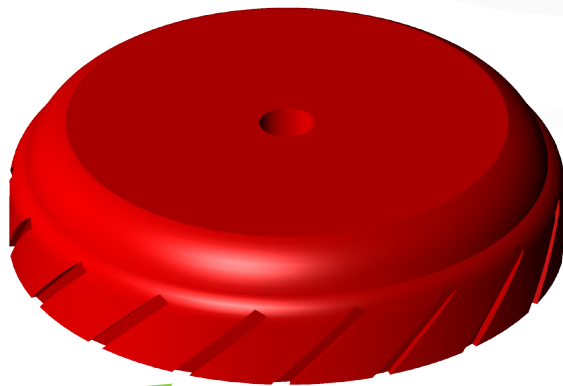
2-14" (51-356mm)

Put simply, the Jetted cup is a jetting, scraping cleaning machine.

It works extremely well in oil, gas and products pipelines. For example, it efficiently breaks up large volumes of accumulated pipeline wax by directing bypass product through it's jetted grooves. Debris is suspended in the turbulent flow and transferred ahead of the pig. It's a great option for low flow applications, along with removal of sand and other debris.

The design of the jetting grooves on the lip of the cup promote the pig to rotate as it travels, ensuring even wear of the cup. This increases cup life and reduces operating costs.

The turbulence created dislodges the debris collected around either the cups or discs, and transfers it ahead of the pig. As a result, these grooves in the cup's surface create five times the scraping surface, making it possible to aim a calibrated amount of fluid to pummel the pipe wall, jetting away – and suspending – stubborn wax, sand or other debris.



Jetted Slots

Size	O.D	I.D	Part #
2"	2.125	0.50	91-3998-02
3"	3.375	0.50	91-3998-03
4"	4.375	0.50	91-3998-04
6"	6.375	1.00	91-3998-06
8"	8.500	1.00	91-3998-08
10"	10.625	1.00	91-3998-10
12"	12.750	1.00	91-3998-12
14"	13.875	1.00	91-3998-14

Check
out our
videos!



Jetted Cup

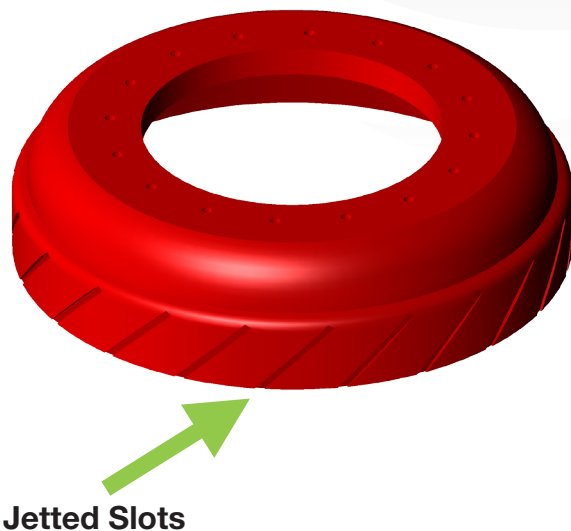
16-48" (406-1219mm)

Put simply, the Jetted cup is a jetting, scraping cleaning machine.

It works extremely well in oil, gas and products pipelines. For example, it efficiently breaks up large volumes of accumulated pipeline wax by directing bypass product through it's jetted grooves. Debris is suspended in the turbulent flow and transferred ahead of the pig. It's a great option for low flow applications, along with removal of sand and other debris.

The design of the jetting grooves on the lip of the cup promote the pig to rotate as it travels, ensuring even wear of the cup. This increases cup life and reduces operating costs.

The turbulence created dislodges the debris collected around either the cups or discs, and transfers it ahead of the pig. As a result, these grooves in the cup's surface create five times the scraping surface, making it possible to aim a calibrated amount of fluid to pummel the pipe wall, jetting away – and suspending – stubborn wax, sand or other debris.



Size	O.D	I.D	Part #
16"	16.000	8.750	91-3998-16
18"	17.875	10.875	91-3998-18
20"	19.875	10.875	91-3998-20
24"	23.875	14.125	91-3998-24
26"	25.875	14.125	91-3998-26
30"	29.875	16.125	91-3998-30
34"	34.000	20.125	91-3998-34
36"	36.000	22.125	91-3998-36
42"	42.125	24.125	91-3998-42
48"	48.500	32.125	91-3998-48

Check
out our
videos!



Conical Cup

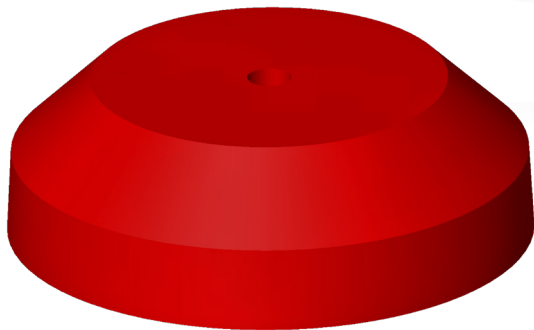
3-14" (76-356mm)

Given that anomalies are a fairly common feature of a pipeline scheduled for maintenance, it's reassuring that pigs mounted with Series M conical cups are engineered to elongate and can traverse pipeline anomalies of up to 20% without damaging the pig. This means that runs go as planned, without delay.

As with all of Apache products, the Series M cup was specifically developed to perform, efficiently and reliably during batching operations. To enhance durability, it's made from Reliathane, Apache's special blend of wear-resistant polyurethane.

The heavy design and large wearing surface provide an excellent and effective seal in displacement and batching operation while still offering unsurpassed flexibility

To enhance cup life, conical cups are available with a variety of wear-resistant additives. In fact, Apache developed a proprietary chemical resistant urethane to help protect against conditions, such as hydrogen sulphide, encountered in severe environments.



Size	O.D	I.D	Part #
3"	3.375	0.500	91-5010-03
4"	4.375	0.500	91-5010-04
6"	6.500	1.000	91-5010-06
8"	8.375	1.000	91-5010-08
10"	10.500	1.000	91-5010-10
12"	12.500	1.000	91-5010-12
14"	14.000	1.000	91-5010-14

Options Available:

- Custom I.D. and bolt patterns available on request.
- Different durometers available on request.
- High temperature material.

Conical Cup

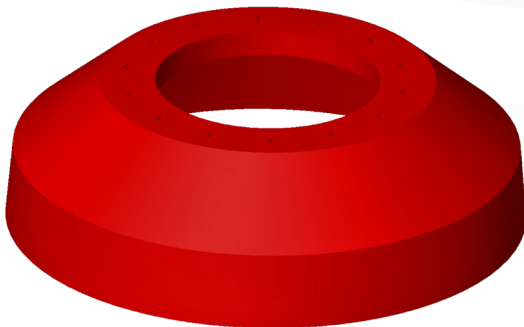
16-48" (406-1219mm)

Given that anomalies are a fairly common feature of a pipeline scheduled for maintenance, it's reassuring that pigs mounted with Series M conical cups are engineered to elongate and can traverse pipeline anomalies of up to 20% without damaging the pig. This means that runs go as planned, without delay.

As with all of Apache products, the Series M cup was specifically developed to perform, efficiently and reliably during batching operations. To enhance durability, it's made from Reliathane, Apache's special blend of wear-resistant polyurethane.

The heavy design and large wearing surface provide an excellent and effective seal in displacement and batching operation while still offering unsurpassed flexibility

To enhance cup life, conical cups are available with a variety of wear-resistant additives. In fact, Apache developed a proprietary chemical resistant urethane to help protect against conditions, such as hydrogen sulphide, encountered in severe environments.



Size	O.D	I.D	Part #
16"	15.875	6.750	91-5010-16
18"	18.000	8.375	91-5010-18
20"	20.000	8.375	91-5010-20
22"	22.000	10.375	91-5010-22
24"	24.000	10.375	91-5010-24
26"	26.000	12.375	91-5010-26
28"	28.000	12.375	91-5010-28
30"	29.875	15.375	91-5010-30
32"	32.000	15.375	91-5010-32
34"	34.000	17.375	91-5010-34
36"	36.000	17.375	91-5010-36
38"	38.000	20.375	91-5010-38
40"	40.000	20.375	91-5010-40
42"	42.000	20.375	91-5010-42
48"	48.125	24.375	91-5010-48

Options Available:

- Custom I.D. and bolt patterns available on request.
- Different durometers available on request.
- High temperature material.

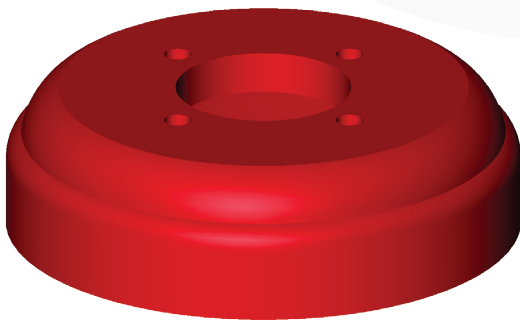
UT-C Cup

6-14" (152-356mm)

The unique design of the UT-C cup offers the cleaning advantages of a scraper cup and the flexibility inherent in a conical cup. To provide a longer cup life, the wear surface of the cup is three times larger than any other UT-style cup on the market. The pressure of the pipeline product presses the cutting edge firmly against the pipe wall, ensuring an optimum seal. The flex area between the shank and the cleaning surface allows the cup to traverse reductions in the pipe bore caused by buckling of, or anomalies in the pipeline.

As with all of Apache products, the Series C cup was specifically developed to perform, efficiently and reliably during batching operations. To enhance durability, it's made from Reliathane, Apache's special blend wear-resistant polyurethane.

To enhance cup life, conical cups are available with a variety of wear-resistant additives. In fact, Apache developed a proprietary chemical resistant urethane to help protect against conditions, such as hydrogen sulphide, encountered in severe environments.



Size	O.D.	I.D.	Part #
6"	6.375	2.500	91-4015-06
8"	8.500	3.000	91-4015-08
10"	10.625	3.625	91-4015-10
12"	12.750	4.625	91-4015-10
14"	13.845	4.625	91-4015-14

Options Available:

- Different durometers available on request.
- High temperature material.
- Custom I.D/O.D bolt pattern and thickness available on request.

UT-M Cup

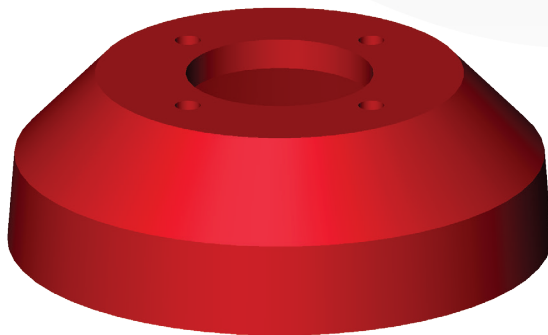
6-14" (152-356mm)

Given that anomalies are a fairly common feature of a pipeline scheduled for maintenance, it's reassuring that pigs mounted with Series M UT cups are engineered to elongate and can traverse pipeline anomalies of up to 20% without damaging the pig. This means that runs go as planned, without delay.

As with all of Apache products, the Series M cup was specifically developed to perform, efficiently and reliably during batching operations. To enhance durability, it's made from Reliathane, Apache's special blend wear-resistant polyurethane.

The heavy design and large wearing surface provide an excellent and effective seal in displacement and batching operation while still offering unsurpassed flexibility.

To enhance cup life, conical cups are available with a variety of wear-resistant additives. In fact, Apache developed a proprietary chemical resistant urethane to help protect against conditions, such as hydrogen sulphide, encountered in severe environments.



Size	O.D.	I.D.	Part #
6"	6.500	2.500	91-4010-06
8"	8.375	3.000	91-4010-08
10"	10.500	3.630	91-4010-10
12"	12.500	4.630	91-4010-12
14"	14.000	4.630	91-4010-14

Options Available:

- Different durometers available on request.
- High temperature material.
- Custom I.D/O.D bolt pattern and thickness available on request.

Sealer Discs

3-14" (76-356mm)

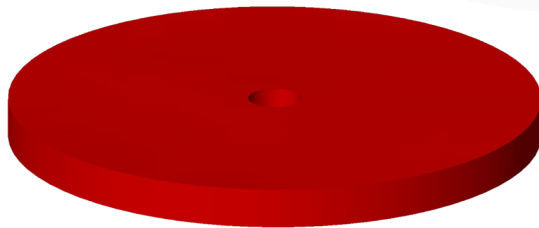
Durable. Reliable. Effective.

Apache sealer discs are also extremely versatile and can perform in bi-directional or uni-directional applications.

To meet your unique requirements, simply order custom dimensions, durometer or material composition of the discs. Standard 72 durometer discs are used for sealing and have the ability to flip over easily for bi-directional travel. 86 durometer discs are used for scraping and cleaning the line.

As with all of Apache products, the Series C disc was specifically developed to perform, efficiently and reliably. To enhance durability, it's made from Reliathane, Apache's special blend of wear-resistant polyurethane.

To enhance disc life, sealer discs are available with a variety of wear-resistant additives. In fact, Apache developed a proprietary chemical resistant urethane to help protect against conditions, such as hydrogen sulphide, encountered in severe environments.



Size	O.D	I.D	Part #
3"	3.375	0.500	91-3210-03
4"	4.375	0.500	91-3210-04
6"	6.375	1.000	91-3210-06
8"	8.375	1.000	91-3210-08
10"	10.500	1.000	91-3210-10
12"	12.500	1.000	91-3210-12
14"	13.875	1.000	91-3210-14

Options Available:

- 72 durometer or 86 durometer.
- Wear-resistant additives.
- Custom I.D./O.D. bolt pattern and thickness available on request.
- High temperature material.

Sealer Discs

16-48" (406-1219mm)

Durable. Reliable. Effective.

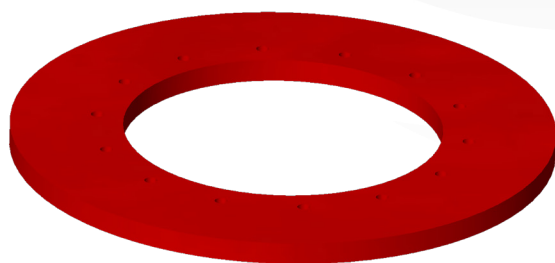
Apache sealer discs are also extremely versatile and can perform in bi-directional or uni-directional applications.

To meet your unique requirements, simply order custom dimensions, durometer or material composition of the discs. Standard 72 durometer discs are used for sealing and have the ability to flip over easily for bi-directional travel. 86 durometer discs are used for scraping and cleaning the line.

As with all of Apache products, the Series C disc was specifically developed to perform, efficiently and reliably. To enhance durability, it's made from Reliathane, Apache's special blend of wear-resistant polyurethane.

To enhance disc life, sealer discs are available with a variety of wear-resistant additives. In fact, Apache developed a proprietary chemical resistant urethane to help protect against conditions, such as hydrogen sulphide, encountered in severe environments.

**Series C parts mount on different style pigs than our Series M.*



Size	O.D	I.D	Part #
16"	15.875	8.750	91-3210-16
18"	17.875	10.875	91-3210-18
20"	20.000	10.875	91-3210-20
22"	22.000	10.875	91-3210-22
24"	24.125	14.125	91-3210-24
26"	26.125	14.125	91-3210-26
28"	28.250	16.125	91-3210-28
30"	30.250	16.125	91-3210-30
32"	32.375	20.125	91-3210-32
34"	34.375	20.125	91-3210-34
36"	36.500	22.125	91-3210-36
38"	38.500	22.125	91-3210-38
40"	40.625	22.125	91-3210-40
42"	42.125	24.125	91-3210-42
48"	48.875	32.125	91-3210-48

Options Available:

- 72 durometer or 86 durometer.
- Wear-resistant additives.
- Custom I.D./O.D. bolt pattern and thickness available on request.
- High temperature material.

Guide Discs

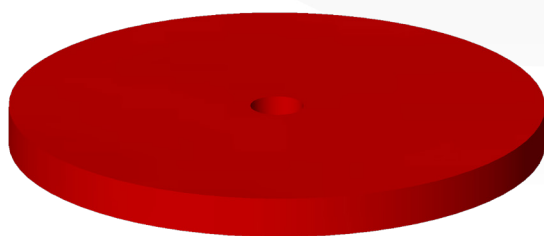
3-14" (76-356mm)

Durable. Reliable. Effective.

Apache guide discs are extremely versatile and can perform in bi-directional or uni-directional applications.

As with all of Apache products, the Series C disc was specifically developed to perform, efficiently and reliably. To enhance durability, it's made from Reliathane, Apache's special blend of wear-resistant polyurethane.

To enhance disc life, guide discs are available with a variety of wear-resistant additives. In fact, Apache developed a proprietary chemical resistant urethane to help protect against conditions, such as hydrogen sulphide, encountered in severe environments.



Size	O.D	I.D	Part #
3"	3.000	0.500	91-3220-03
4"	4.000	0.500	91-3220-04
6"	6.000	1.000	91-3220-06
8"	8.000	1.000	91-3220-08
10"	10.000	1.000	91-3220-10
12"	12.000	1.000	91-3220-12
14"	13.750	1.000	91-3220-14

Options Available:

- Wear-resistant additives.
- Custom I.D./O.D. bolt pattern and thickness available on request.
- High temperature material.

Guide Discs

16-48" (406-1219mm)

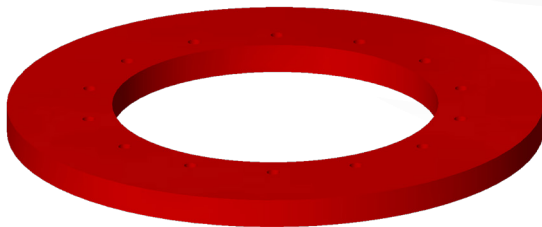
Durable. Reliable. Effective.

Apache guide discs are extremely versatile and can perform in bi-directional or uni-directional applications.

As with all of Apache products, the Series C disc was specifically developed to perform, efficiently and reliably. To enhance durability, it's made from Reliathane, Apache's special blend of wear-resistant polyurethane.

To enhance disc life, guide discs are available with a variety of wear-resistant additives. In fact, Apache developed a proprietary chemical resistant urethane to help protect against conditions, such as hydrogen sulphide, encountered in severe environments.

**Series C parts mount on different style pigs than our Series M.*



Size	O.D	I.D	Part #
16"	15.250	8.750	91-3220-16
18"	17.250	10.875	91-3220-18
20"	19.250	10.875	91-3220-20
22"	21.250	10.875	91-3220-22
24"	23.250	14.125	91-3220-24
26"	25.250	14.125	91-3220-26
28"	27.250	16.125	91-3220-28
30"	29.250	16.125	91-3220-30
32"	31.250	20.125	91-3220-32
34"	33.250	20.125	91-3220-34
36"	35.250	22.125	91-3220-36
38"	37.250	22.125	91-3220-38
40"	39.250	22.125	91-3220-40
42"	41.250	24.250	91-3220-42
48"	47.250	32.125	91-3220-48

Options Available:

- Wear-resistant additives.
- Custom I.D./O.D. bolt pattern and thickness available on request.
- High temperature material.

Sealer Discs

3-14" (76-356mm)

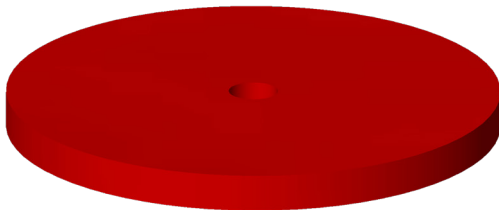
Durable. Reliable. Effective.

Apache sealer discs are extremely versatile and can perform in bi-directional or uni-directional applications.

To meet your unique requirements, simply order custom dimensions, durometer or material composition of the discs. Standard 72 durometer discs are used for sealing and have the ability to flip over easily for bi-directional travel. 86 durometer discs are used for scraping and cleaning the line.

As with all of Apache products, the Series M disc was specifically developed to perform, efficiently and reliably. To enhance durability, it's made from Reliathane, Apache's special blend of wear-resistant polyurethane.

To enhance disc life, sealer discs are available with a variety of wear-resistant additives. In fact, Apache developed a proprietary chemical resistant urethane to help protect against conditions, such as hydrogen sulphide, encountered in severe environments.



Size	O.D	I.D	Part #
3"	3.375	0.500	91-5210-03
4"	4.375	0.500	91-5210-04
6"	6.375	1.000	91-5210-06
8"	8.375	1.000	91-5210-08
10"	10.500	1.000	91-5210-10
12"	12.500	1.000	91-5210-12
14"	13.875	1.000	91-5210-14

**Part numbers shown are for 85 Durometer (72 also available)*

Options Available:

- 72 durometer or 86 durometer.
- Wear-resistant additives.
- Custom I.D./O.D. bolt pattern and thickness available on request.
- High temperature material.

Sealer Discs

16-48" (406-1219mm)

Durable. Reliable. Effective.

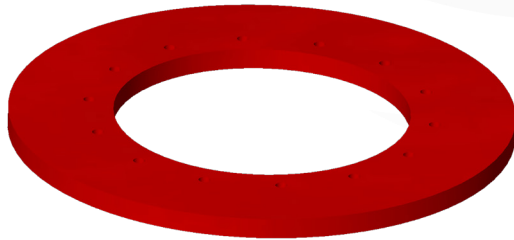
Apache sealer discs are extremely versatile and can perform in bi-directional or uni-directional applications.

To meet your unique requirements, simply order custom dimensions, durometer or material composition of the discs. Standard 72 durometer discs are used for sealing and have the ability to flip over easily for bi-directional travel. 86 durometer discs are used for scraping and cleaning the line.

As with all of Apache products, the Series M disc was specifically developed to perform, efficiently and reliably. To enhance durability, it's made from Reliathane, Apache's special blend of wear-resistant polyurethane.

To enhance disc life, sealer discs are available with a variety of wear-resistant additives. In fact, Apache developed a proprietary chemical resistant urethane to help protect against conditions, such as hydrogen sulphide, encountered in severe environments.

**Series M parts mount on different style pigs than our Series C.*



Size	O.D	I.D	Part #
16"	15.875	6.750	91-5210-16
18"	17.875	8.375	91-5210-18
20"	20.000	8.375	91-5210-20
22"	22.000	10.375	91-5210-22
24"	24.125	10.375	91-5210-24
26"	26.125	12.375	91-5210-26
28"	28.250	12.375	91-5210-28
30"	30.250	15.375	91-5210-30
32"	32.375	15.375	91-5210-32
34"	34.375	17.375	91-5210-34
36"	36.500	17.375	91-5210-36
38"	38.500	20.875	91-5210-38
40"	40.625	20.875	91-5210-40
42"	42.125	20.875	91-5210-42
48"	48.875	24.875	91-5210-48

Options Available:

- 72 durometer or 86 durometer.
- Wear-resistant additives.
- Custom I.D./O.D. bolt pattern and thickness available on request.
- High temperature material.

**Part numbers shown are for 85 Durometer (72 also available)*

Guide Discs

3-14" (76-356mm)

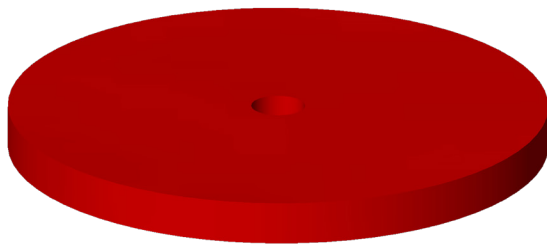
Durable. Reliable. Effective.

Apache guide discs are extremely versatile and can perform in bi-directional or uni-directional applications.

To meet your unique requirements, simply order custom dimensions, durometer or material composition of the discs.

As with all of Apache products, the Series M disc was specifically developed to perform, efficiently and reliably. To enhance durability, it's made from Reliathane, Apache's special blend of wear-resistant polyurethane.

To enhance disc life, guide discs are available with a variety of wear-resistant additives. In fact, Apache developed a proprietary chemical resistant urethane to help protect against conditions, such as hydrogen sulphide, encountered in severe environments.



Size	O.D	I.D	Part #
3"	3.000	0.500	91-5220-03
4"	4.000	0.500	91-5220-04
6"	6.000	1.000	91-5220-06
8"	8.000	1.000	91-5220-08
10"	10.000	1.000	91-5220-10
12"	12.000	1.000	91-5220-12
14"	13.250	1.000	91-5220-14

Options Available:

- Wear-resistant additives.
- Custom I.D./O.D. bolt pattern and thickness available on request.
- High temperature material.

Guide Discs

16-48" (406-1219mm)

Durable. Reliable. Effective.

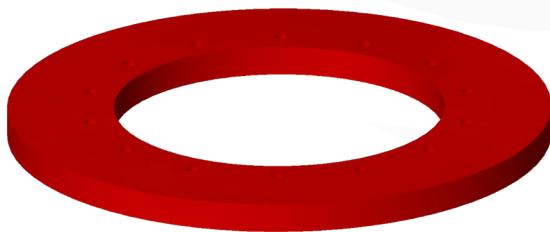
Apache guide discs are extremely versatile and can perform in bi-directional or uni-directional applications.

To meet your unique requirements, simply order custom dimensions, durometer or material composition of the discs.

As with all of Apache products, the Series M disc was specifically developed to perform, efficiently and reliably. To enhance durability, it's made from Reliathane, Apache's special blend of wear-resistant polyurethane.

To enhance disc life, guide discs are available with a variety of wear-resistant additives. In fact, Apache developed a proprietary chemical resistant urethane to help protect against conditions, such as hydrogen sulphide, encountered in severe environments.

*Series M parts mount on different style pigs than our Series C.



Size	O.D	I.D	Part #
16"	15.250	6.750	91-5220-16
18"	17.250	8.375	91-5220-18
20"	19.250	8.375	91-5220-20
22"	21.250	10.375	91-5220-22
24"	23.250	10.375	91-5220-24
26"	25.250	12.375	91-5220-26
28"	27.250	12.375	91-5220-28
30"	29.250	15.375	91-5220-30
32"	31.250	15.375	91-5220-32
34"	33.250	17.375	91-5220-34
36"	35.250	17.375	91-5220-36
38"	37.250	20.875	91-5220-38
40"	39.250	20.875	91-5220-40
42"	41.250	20.875	91-5220-42
48"	47.250	24.875	91-5220-48

Options Available:

- Wear-resistant additives.
- Custom I.D./O.D. bolt pattern and thickness available on request.
- High temperature material.

Sealer Disc

16-48" (406-1219mm)

As with all of Apache products, the Series MDK disc was specifically developed to perform, efficiently and reliably. To enhance durability, it's made from Reliathane, Apache's special blend of wear-resistant polyurethane.

To enhance disc life, guide discs are available with a variety of wear-resistant additives. In fact, Apache developed a proprietary chemical resistant urethane to help protect against conditions, such as hydrogen sulphide, encountered in severe environments.



Apache sealer discs are also extremely versatile and can perform in bi-directional or uni-directional applications.

Size	O.D	I.D	# Holes	Part #
16"	16.000	8.750	12	91-7200-16
20"	20.000	10.875	12	91-7200-20
24"	24.000	14.125	12	91-7200-24
30"	30.000	18.125	12	91-7200-30
36"	36.000	22.250	12	91-7200-36
42"	43.120	26.250	12	91-7200-42
48"	49.000	28.250	12	91-7200-48

**Part numbers shown are for 72 Durometer (85 also available)*

Guide Disc

16-48" (406-1219mm)

The Series MDK sealer disc consists of a metric bolt pattern and features 12 holes.

As with all of Apache products, the Series MDK disc was specifically developed to perform, efficiently and reliably. To enhance durability, it's made from Reliathane, Apache's special blend of wear-resistant polyurethane.

To enhance disc life, guide discs are available with a variety of wear-resistant additives. In fact, Apache developed a proprietary chemical resistant urethane to help protect against conditions, such as hydrogen sulphide, encountered in severe environments.



These discs center the sealing discs in the line, which allows the four sealing discs in the center to form a quadruple seal during displacement.

Size	O.D	I.D	# Holes	Part #
16"	15.250	8.750	12	91-7205-16
20"	19.250	10.875	12	91-7205-20
24"	23.250	14.125	12	91-7205-24
30"	29.300	18.125	12	91-7205-30
36"	35.000	22.250	12	91-7205-36
42"	40.750	26.250	12	91-7205-42
48"	46.630	28.250	12	91-7205-48

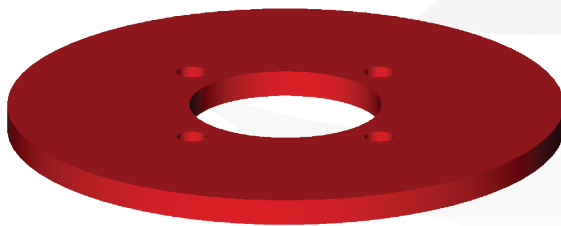
UT Sealer/Guide Disc

6-14" (152-356mm)

Durable. Reliable. Effective. Apache sealer and guide discs are extremely versatile and can perform in bi-directional or uni directional applications. All UT style cups, discs, and sealers come with a standard bolt pattern and are designed solely for the Universal Transmitter Mandrel. Standard 72 durometer discs are used for sealing and have the ability to flip over easily for bi-directional travel. 86 durometer discs are used for scraping and cleaning the line. Guide discs are utilized to centralize and support the pig during any phase of pipeline operation.

To enhance durability, it's made from Reliathane, Apache's special blend of wear-resistant polyurethane. To enhance disc life, sealer discs are available with a variety of wear-resistant additives. In fact, Apache developed a proprietary chemical resistant urethane to help protect against conditions, such as hydrogen sulphide, encountered in severe environments.

To meet your unique requirements, simply order custom dimensions, durometer or material composition of the discs.



SEALER DISC

Size	O.D.	I.D.	Part #
6"	6.375	2.500	91-4210-06
8"	8.375	3.000	91-4210-08
10"	10.500	3.625	91-4210-10
12"	12.500	4.625	91-4210-12
14"	13.875	4.625	91-4210-14



GUIDE DISC

Size	O.D.	I.D.	Part #
6"	6.000	2.500	91-4210-06
8"	8.000	3.000	91-4210-08
10"	10.000	3.625	91-4210-10
12"	12.000	4.625	91-4210-12
14"	13.250	4.625	91-4210-14

*Sealer disc available in 70 Durometer.

Options Available:

- Different durometers available on request.
- High temperature material.

CARVER Disc

3-48" (76-1219mm)

The diagonal grooves provide unmatched cleaning capabilities as the numerous edges scrape the pipe wall removing wax, scale and other pipeline debris. Similar in design to Apache's Jetted cup, the cavity between the carving edges permits bypass and creates turbulent flow which allows fluid to pass along the wall of the pipe to jet away wax, sand and other debris.



Size	O.D	I.D	Part #
3"	3.000	0.50	91-3230-03
4"	4.000	0.50	91-3230-04
6"	6.000	1.00	91-3230-06
8"	8.000	1.00	91-3230-08
10"	10.000	1.00	91-3230-10
12"	12.000	1.00	91-3230-12
14"	13.250	1.00	91-3230-14

Size	O.D	I.D	Part #
16"	15.250	8.750	91-3230-16
20"	19.250	10.875	91-3230-20
24"	23.250	14.125	91-3230-24
30"	29.250	16.125	91-3230-30
36"	35.250	22.125	91-3230-36
42"	41.250	24.125	91-3230-42
48"	47.250	32.125	91-3230-48

UT CARVER Disc

6-14" (152-356mm)

The diagonal grooves provide unmatched cleaning capabilities as the numerous edges scrape the pipe wall removing wax, scale and other pipeline debris. Similar in design to Apache's Jetted cup, the cavity between the carving edges permits bypass and creates turbulent flow which allows fluid to pass along the wall of the pipe to jet away wax, sand and other debris.



Size	O.D	Part #
6"	6.000	91-4230-06
8"	8.000	91-4230-08
10"	10.000	91-4230-10
12"	12.000	91-4230-12
14"	13.250	91-4230-14

This CARVER disc was specifically designed to fit UT Mandrel style pig bodies.

Butterfly Disc

3-10" (76-254mm)

Apache Butterfly Discs allow the operator to run pigs in pipelines with changes in inside diameter and can be used in both Bi-Directional and Uni-Directional applications. The durometer or composition of the discs can vary to meet any special requirements.



Transition Size:

3" to 4"

4" to 6"

6" to 8"

8" to 10"

Size	Part #
3" x 4"	91-3580-03
4" x 6"	91-3580-04
6" x 8"	91-3580-06
8" x 10"	91-3580-08

**Other Sizes Available On Request*

Plow Blade

Available for most 16-48"
Apache Pigs

Plow Blades are used in replacement of flat wire or pencil block brush for applications where a liner is present for paraffin or debris removal



Wrap Brush - Model BB

Look no further. Apache offers a comprehensive range of wrap brushes for your cleaning needs. All Apache Wrap Brushes mount around a pig body and secure themselves between sealing elements with fasteners. Used commonly on solid cast, all urethane pigs, the wrap brush can be quickly and easily installed.

Effective. Reliable. Durable.



Model BB Flat

Size	Part #
3"	94-0100-03
4"	94-0100-04
6"	94-0100-06
8"	94-0100-08
10"	94-0100-10
12"	94-0100-12
14"	94-0100-14
16"	94-0100-16
18"	94-0100-18
20"	94-0100-20
22"	94-0100-22
24"	94-0100-24

Features & Benefits:

FLAT

- Effective when moderate to heavy cleaning is required.
- Provides 360 degree coverage with tandem installation.
- Easily negotiates bends and anomalies in the pipe bore.

PENCIL

- Individual wires reach into pipeline pits, cleaning them thoroughly.
- Extremely durable, so it can be used repeatedly.

Options Available:

- Carbon Steel or Stainless Steel trim material available for Flat wire profile.
- Plastic material available for Flat only.
- Custom trim lengths available on request.
- Custom-manufactured to suit all pig requirements.

Circular Flange - Model RB

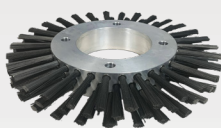
Effective. Reliable. Durable. Our Model RB brush is the best general purpose pipeline cleaning solution today. With years of experience, Apache will even custom-design the optimal brush for you. The RB Brush mounts to a pig body's flange by either single or multiple bolts. Brush trims are secured to a strong, custom-made plate, not pre-perforated sheets.



Centre Hole RB
6-14" Flat



Bolt Pattern RB
16-56" Flat



UT-RB Pencil
6"-14"

Features & Benefits:

FLAT

- Effective when moderate to heavy cleaning is required.
- Provides 360 degree coverage installation.
- Excellent for bidirectional applications.
- Act as centering guide in the pipeline.
- Can be stacked for more aggressive cleaning.
- Easily negotiates bends and anomalies in the pipe bore.

PENCIL

- Individual wires reach into pipeline pits, cleaning them thoroughly.
- Generally used before ILI runs to ensure a 360 degree clean.
- Extremely durable, so it can be used repeatedly.
- Available in Carbon Steel or Stainless Steel trim.
- Available in sizes ranging from 6" - 56"-plus.
- Its flexibility and ability to negotiate varying internal diameters make the pencil brush an excellent choice for cleaning multi diameter pipelines.

Options Available:

- Custom trim lengths available on request.
- Trim Material – Carbon Steel, Stainless Steel & Plastic (Flat only).
- Flanges that carry the pencil brushes can be manufactured to use shorter trim lengths for scale or other problems that require a short strong brush with less flexibility.
- Alternatively, pencil brushes can feature longer trim to clean a pipeline that is, for example, partially obstructed by wax or dents or has design issues that call for the brush to flex, then resume cleaning.
- Can be custom-manufactured to suit all pig requirements.

CENTRE HOLE

Carbon Steel		
Size	Flat Wire*	Pencil Wire**
6"	94-0940-06	94-0941-06
8"	94-0940-08	94-0941-08
10"	94-0940-10	94-0941-10
12"	94-0940-12	94-0941-12
14"	94-0940-14	94-0941-14

* Available in SS or Plastic Trim

** Available in SS

CIRCULAR BOLT PATTERN

Carbon Steel		
Size	Flat Wire*	Pencil Wire**
6"	94-0950-06	94-0951-06
8"	94-0950-08	94-0951-08
10"	94-0950-10	94-0951-10
12"	94-0950-12	94-0951-12
14"	94-0950-14	94-0951-14
16"	94-0940-16	94-0941-16
18"	94-0940-18	94-0941-18
20"	94-0940-20	94-0941-20
22"	94-0940-22	94-0941-22
24"	94-0940-24	94-0941-24
26"	94-0940-26	94-0941-26
28"	94-0940-28	94-0941-28
30"	94-0940-30	94-0941-30
32"	94-0940-32	94-0941-32
34"	94-0940-34	94-0941-34
36"	94-0940-36	94-0941-36
42"	94-0940-42	94-0941-42
48"	94-0940-48	94-0941-48
56"	94-0940-56	94-0941-56

* Available in SS or Plastic Trim

** Available in SS

Circular Flange - pitPRO™

3-16" (76-406mm)

Effective. Reliable. Durable. Our newest model of cleaning brush delivers incredible cleaning performance with outstanding durability.

With its high-density polyethylene core that features 304 stainless steel pencil brushes, the pitPRO™ pencil brush is a highly effective cleaning brush.



Size	Pattern	
	Centre Hole	UT Bolt Pattern
3"	94-0150-03	n/a
4"	94-0150-04	n/a
6"	94-0150-06	94-0152-06
8"	94-0150-08	94-0152-08
10"	94-0150-10	94-0152-10
12"	94-0150-12	94-0152-12
14"	94-0150-14	94-0152-14
16"	n/a	94-0152-16

*18" to 56" Available On Request.

Features & Benefits:

- Available in stock sizes ranging from 3" to 16".
- Cleans powerfully, removing wax and scale.
- Individual wires reach into pipeline pits, cleaning them thoroughly.
- Extremely durable, so it can be used repeatedly.
- Its flexibility and ability to negotiate varying internal diameters make the pitPRO™ the great choice for cleaning multi diameter pipelines.

Options Available:

- Custom trim lengths available on request .
- Custom OD's and flange sizes available.
- We can design a solution for you by simply adjusting wire diameter and length, and the number of brushes on the pig.

Block Brush - Model XB

Effective. Reliable. Durable. Designed to mount on a fixed or cantilever spring, the XB brush maintains a continuous scraping force for the removal of rust, scale and other contaminants adhering to the pipe wall. Trims are secured to a strong, custom-made plate, not pre-perforated sheets.

Features & Benefits:

FLAT

- Excellent for moderate to heavy cleaning.
- Cleans powerfully, removing wax and scale.
- Effective in multi diameter pipelines.
- Navigate through pipeline anomalies.
- Model XB fits 16" to 48" pigs (XB-S for 16"-18").

PENCIL

- Excellent for moderate to heavy cleaning.
- Each wire acts with independent force, entering the pit and removing debris.
- Best choice for cleaning multi diameter pipelines.
- Navigate through pipeline anomalies.
- Model XB fits 16" to 48" pigs (XB-S for 16"-18").



Model XB Flat



Model XB Pencil



Model XB Nylon



**Model XB
Cantilever Assembly**



**Model XB
Fixed Assembly**

Pig Size	Model	Material			
		Flat Wire	Flat Wire - SS	Flat Nylon	Pencil Wire
16" - 18"	XB-S	94-0400-00	94-0404-00	94-0408-00	94-0409-20
20" - 48"	XB	94-0410-00	94-0414-00	94-0418-00	94-0419-20

Options Available:

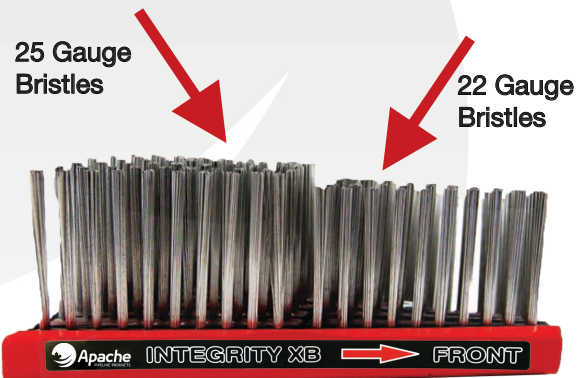
- Trim Material – Carbon Steel, Stainless Steel, Nylon & Plastic (Flat only).
- Custom trim lengths and diameters are available.
- XB fitted to a fixed spring assembly.
- XB fitted to a cantilever-style spring.

Block Brush - Integrity XB

20-48" (508-1219mm)

Apache designed the Integrity XB specifically to help operators thoroughly clean any internal pits in preparation for ILI runs or Inhibitor applications.

Proven as a proficient and aggressive cleaning tool for day to day operations, it utilizes unique Pencil Brush Technology. Each front bristle features stiff 22 gauge memory wire bristles for heavy scraping and longer, flexible 25 gauge bristles at the rear for deep cleaning. High grade tinned hardened & tempered steel memory wire provide excellent cleaning performance & corrosion resistance.



Size	Part #
20" - 56"	94-0419-50

Features & Benefits:

- 360° coverage of rebound memory wire.
- For use in 20" through 56" pipelines.
- Premier brush for pre-inspection cleaning and pre-inhibitor applications.
- Each brush uses more than 7,000 hardened, tempered steel wires to deliver outstanding cleaning performance.
- To enhance cleaning effectiveness and brush life, all parts are corrosion resistant. The back plate is powder coated, every individual steel wire is tin-coated, and the base consists of high-grade urethane.
- Designed to remove deposits from internal pits while insuring excellent general purpose cleaning.
- Pit cleaning bristles improve effectiveness of corrosion inhibitors.

Options Available:

- Custom trim lengths and diameters are available.
- The innovative, Integrity XB is truly unique. If you would like us to provide a customized Integrity XB brush for you, just let us know.