

# Conical Cup

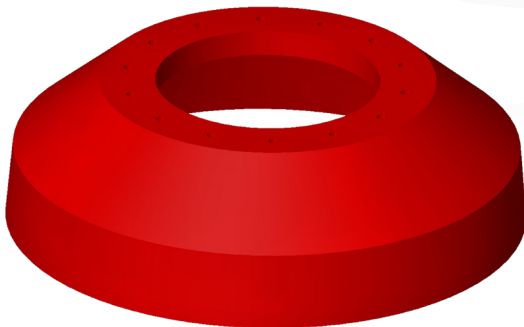
16-48" (406-1219mm)

Given that anomalies are a fairly common feature of a pipeline scheduled for maintenance, it's reassuring that pigs mounted with Series M conical cups are engineered to elongate and can traverse pipeline anomalies of up to 20% without damaging the pig. This means that runs go as planned, without delay.

As with all of Apache products, the Series M cup was specifically developed to perform, efficiently and reliably during batching operations. To enhance durability, it's made from Reliathane, Apache's special blend of wear-resistant polyurethane.

The heavy design and large wearing surface provide an excellent and effective seal in displacement and batching operation while still offering unsurpassed flexibility

To enhance cup life, conical cups are available with a variety of wear-resistant additives. In fact, Apache developed a proprietary chemical resistant urethane to help protect against conditions, such as hydrogen sulphide, encountered in severe environments.



Size	O.D	I.D	Part #
16"	15.875	6.750	91-5010-16
18"	18.000	8.375	91-5010-18
20"	20.000	8.375	91-5010-20
22"	22.000	10.375	91-5010-22
24"	24.000	10.375	91-5010-24
26"	26.000	12.375	91-5010-26
28"	28.000	12.375	91-5010-28
30"	29.875	15.375	91-5010-30
32"	32.000	15.375	91-5010-32
34"	34.000	17.375	91-5010-34
36"	36.000	17.375	91-5010-36
38"	38.000	20.375	91-5010-38
40"	40.000	20.375	91-5010-40
42"	42.000	20.375	91-5010-42
48"	48.125	24.375	91-5010-48

## Options Available:

- Custom I.D. and bolt patterns available on request.
- Different durometers available on request.
- High temperature material.