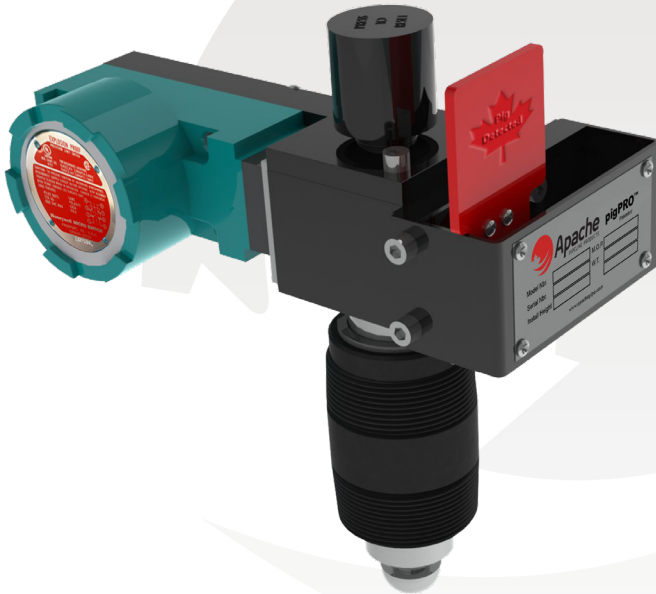


Series 53

Visual/Electrical Indication, Manual/Auto Reset



The Series 53 is a combination visual and electrical indicator with manual and automatic reset.

Offering both visual and electrical indicator capabilities and manual and automatic reset features, the Series 53 is the most versatile member of Apache's pigPRO™ Series, a patented line of intrusive pig passage indicators that reliably detect the precise location of a cleaning pig as it travels within the pipeline network. When a cleaning pig passes the system's intruding plunger, it activates the plunger and triggers a visual flag indicator, signaling the pig's location.

Features & Benefits:

The Series 53 includes a thread mounting nipple, standard lower housing with fluorocarbon O-Rings, hemispherical plunger with a flag assembly and weather sealed & explosion proof limit switch. The switch employed on this model is NEMA rated, UL listed and CSA certified to suit most applications.

Options:

Flange Mount models are designed to connect to existing flanged connections and are available in ANSI Class 150, 300, 600 or 900/1500 flanges.

Extension Pole:

Aluminum extensions can be attached to enable detection of the pigs passage on buried pipelines. All pressure sealing components remain below the extension module. Available in lengths 2' to 10'.

Check
out our
videos!

